

# fielding focus

PEOPLE, PROGRAMS & PROGRESS

AT FIELDING GRADUATE UNIVERSITY

## HOW WILL YOU LIVE THE REST OF YOUR LIFE?

WHAT POSITIVE AGING CAN DO FOR YOU (PAGE 4)

**ALSO IN THIS ISSUE:**

The Fourth Annual International Conference on Positive Aging (Page 6)

Fielding: A Pioneer in Midlife Transition (Page 9)

2010 Annual Report (Page 11)

New Graduates (Page 23)

WINTER 2010-11  
VOLUME 9  
NUMBER 1



Teresa Marquez-Lopez, EdD (ELC associate dean), presented at policy sessions during the White House Initiative on Educational Excellence for Hispanic Americans in mid-October.

# CONTENTS

## FEATURES

**How Will You Live the Rest of Your Life?**  
What Positive Aging Can Do for You..... 4

**Fielding Hosts the Fourth International Conference on Positive Aging**..... 6

**Star Speakers—Fourth Annual International Conference on Positive Aging**..... 8

**Old Gold: The Creative Longevity and Wisdom Project**..... 8

**Fielding Graduate University: A Pioneer in Midlife Education**..... 9

## 2010 ANNUAL REPORT

**CFO's Message**..... 11

**Statement of Activities**..... 12

**Fielding Facts**..... 13

**Quick Facts**..... 13

**Contributors**..... 14

**Fielding Scholarships & Fellowships**..... 16

**Board of Trustees**..... 17

## UPDATES

**President's Message**..... 3

**Faculty: Research & Practice**..... 18

**Alumni & Student: News & Goods**..... 20

**Scholarship & Practice**..... 21

**Graduates**..... 23

**Kenya 2010**..... 28

## FIELDING AT A GLANCE

**FIELDING GRADUATE UNIVERSITY** is a nonprofit, accredited university headquartered in Santa Barbara, CA, where it was founded in 1974. Programs are offered in clinical and media psychology, human and organizational development, and educational leadership. Fielding's distributed learning format supports self-directed professionals wanting to pursue advanced degrees or certificates while maintaining family, work, and community commitments. Our global community is comprised of professionals who are dedicated to transformational learning; social justice; and innovation and advancement for individuals, organizations, communities, and society.

Fielding's academic programs are administered through three schools. Degree and post-doctoral certificate programs are listed below. Other certificate and continuing education programs are described at [www.fielding.edu](http://www.fielding.edu).

### School of Psychology (PSY)

- PhD, Clinical Psychology
- PhD, Media Psychology
- MA, Media Psychology and Social Change
- Postdoctoral Respecialization in Clinical Psychology
- Postdoctoral Certificate in Neuropsychology

### School of Educational Leadership & Change (ELC)

- EdD
- MA, Collaborative Educational Leadership

### School of Human & Organizational Development (HOD)

- PhD, Human and Organizational Systems
- PhD, Human Development
- MA, Organizational Management and Development

### Institutional Accreditation

Fielding Graduate University is a 501(c)(3) nonprofit organization accredited by the Accrediting Commission for Senior Colleges and Universities of the Western Association of Schools and Colleges (WASC, 985 Atlantic Avenue, Suite 100, Alameda, CA 94501, 510.748.9001).

### Equal Opportunity Statement

Fielding Graduate University does not discriminate on the basis of race, gender, religion, age, ethnic origin, sexual orientation, or disability in either admissions or employment. The complete text of Fielding's equal opportunity policy is available at [www.fielding.edu](http://www.fielding.edu).

# fielding focus

PEOPLE, PROGRAMS & PROGRESS AT FIELDING GRADUATE UNIVERSITY

WINTER 2010-11 • VOLUME 9, NUMBER 1

#### PRESIDENT

Richard S. Meyers

#### DIRECTOR OF COMMUNICATIONS

Sylvia Williams

#### EDITOR & FEATURE WRITER

Roberta Grant

#### ART DIRECTOR

Susan Stensland Boettner

#### CONTRIBUTORS

Leni Wildflower • Charles McClintock • Katrina Rogers • Lisa Lewis  
Frances Goodrow • Marine Dumas

#### CONTRIBUTING STAFF

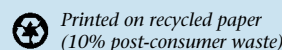
Dilys Jones • Cheri Gurse • Susan Love

*Fielding Focus* is published once a year by Fielding Graduate University  
2112 Santa Barbara Street, Santa Barbara, CA 93105.

*Fielding Focus* is available online at [www.fielding.edu](http://www.fielding.edu).

Reader responses are welcome and should be sent to Sylvia Williams,  
[swilliams@fielding.edu](mailto:swilliams@fielding.edu).

© 2010 Fielding Graduate University. All rights reserved. No portion of this publication may be reproduced in any form without prior written permission from Fielding Graduate University.



### Mixed Sources

Product group from well-managed forests and other controlled sources  
[www.fsc.org](http://www.fsc.org) Cert no. SCS-COC-002207  
© 1996 Forest Stewardship Council



Richard S. Meyers, PhD  
President, Fielding Graduate University

## President's Letter

As usual, the Summer Sessions were academic highlights of the year. Kansas City and Tucson provided stimulating learning opportunities for all present, but Tucson had added value: faculty, students, and alumni of the ELC EdD program made significant efforts to engage in authentic scholarly ways with the local community around issues of social justice, immigration, and ethnic studies.

I was privileged to address this historic panel symposium which included elected officials and members of law enforcement from the United States, Mexico, and local Native American tribes as well as border residents and business owners.

"We want to understand what the real issues are from a human perspective, not a political one," said organizer Joanne Armenta, a Tucson-area ELC student. "We want to know the truth of what these people in the borderlands face day to day—the social, economic, and ecological inequalities. Only then can we help empower them to be part of the solution."

On another note, I am extremely pleased to announce three new appointments that will turbocharge Fielding's impact in the adult education community. Our board of trustees has appointed two new members: K-12 education expert Marlene Canter, EdD, and student trustee Donna DeRoo (read more on page 17). And our new vice president for advancement and development is David Edelman, a long-time Santa Barbara resident who has worked in both the business and nonprofit sectors. Edelman will join Fielding's senior management team to lead the university's activities in development, alumni relations, corporate and foundation affiliations, community outreach, and external relations.

Finally, Fielding is proud to host the fourth annual International Conference on Positive Aging, to be held in Los Angeles December 7–10, 2010. We devote the feature articles in this issue to "the new old age," that is, the three or four decades baby boomers can expect to live after the age of 55. This "second half of life" must be socially constructed in a coherent fashion and individually planned for in terms of finance, health, social connections, new work, and renewed sense of purpose. It's a life stage for all future generations, and it may prove to be the boomer's greatest legacy.

Enjoy!



Suzanne Baer, PhD (HOD 04), with  
President Meyers in Santa Barbara, CA,  
at the Channel City Club. Baer spoke  
about the art of aging (page 20).

# HOW WILL YOU LIVE THE REST OF YOUR LIFE?

## WHAT POSITIVE AGING CAN DO FOR YOU

Fifty years ago, most grandmothers wore housedresses, baked cookies, and didn't venture much beyond their garden. Retired grandfathers rocked on the porch with the paper and a smoke, sometimes venturing into town to meet up with their cronies at the club or coffee shop. And that was that.

Enter the boomer generation, 78 million strong. After radicalizing young adulthood in the 1960s, the boisterous boomers are beginning to retire and they intend to redefine this latest "passage" as well. After all, they're used to living on the nation's center stage. Why on earth would they allow society to shove them out of the spotlight and into the wings of "senior citizenry"? They reject the very concept. "Rewire, not retire!" is their mantra.

What you might not know is that populations are aging all over the world. Ted C. Fishman, the author of a forthcoming book on the topic, tells us that, globally, "By 2018, 65-year-olds will outnumber those under 5—a historic first. In 2050, developed countries are on track to have half as many people under 15 as they

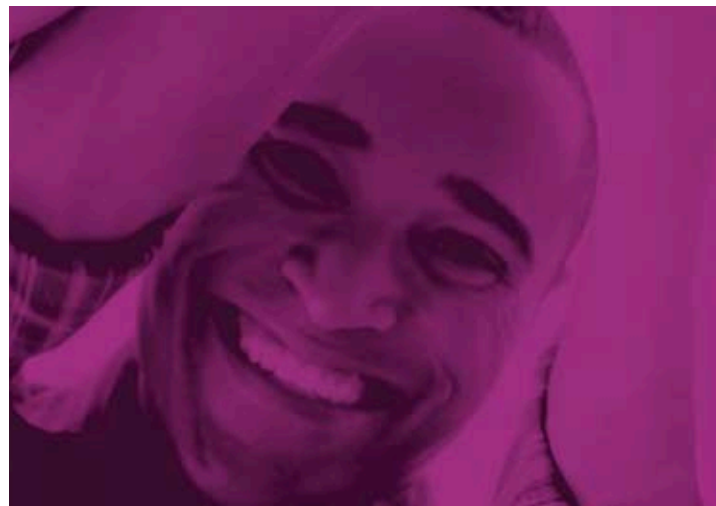
do over 60. In short, the age mix of the world is turning upside down and at unprecedented rates."

Fishman notes that this will produce "profound change in nearly every important relationship we have—as family members, neighbors, citizens of nations and the world."\*

Not only has the gap between retirement and death grown from 10 years to 20, 30, or even 40, we're also living healthier and staying active as we age. Financially comfortable boomers are charging ahead into a post-midlife era of learning, playing, volunteering, even launching second careers. But others need help to plan for the rest of their life.

Therefore, says psychologist Elinor Greenberg, PhD, we as a society "must find and use new developmental models in order to reinvent that lengthening period"—what she calls "the third third" of life. Others refer to it as "the second half."

"Where there's a will, there's a way," the boomers insist. To help those who don't have a million dollars socked away (and, in many cases, even those who do), a growing movement known as "positive aging" has sparked a dynamic national conversation among professionals involved in aspects of eldercare such as financial planning, elder law, geriatric care, career coaching, psychology, and sociology. The movement focuses on creating better lives for the elderly but also on making these transitions easier for anyone over the age of 50.



“That’s when we begin to encounter the problems surrounding the aging of our parents,” explains Katrina Rogers, PhD, director of Fielding Graduate University’s Institute for Social Innovation and chair of the fourth annual International Conference on Positive Aging. “For example,” Rogers says, “my mother, 82, was diagnosed with cancer this year. Creating an optimal care situation for her has involved our entire family.”

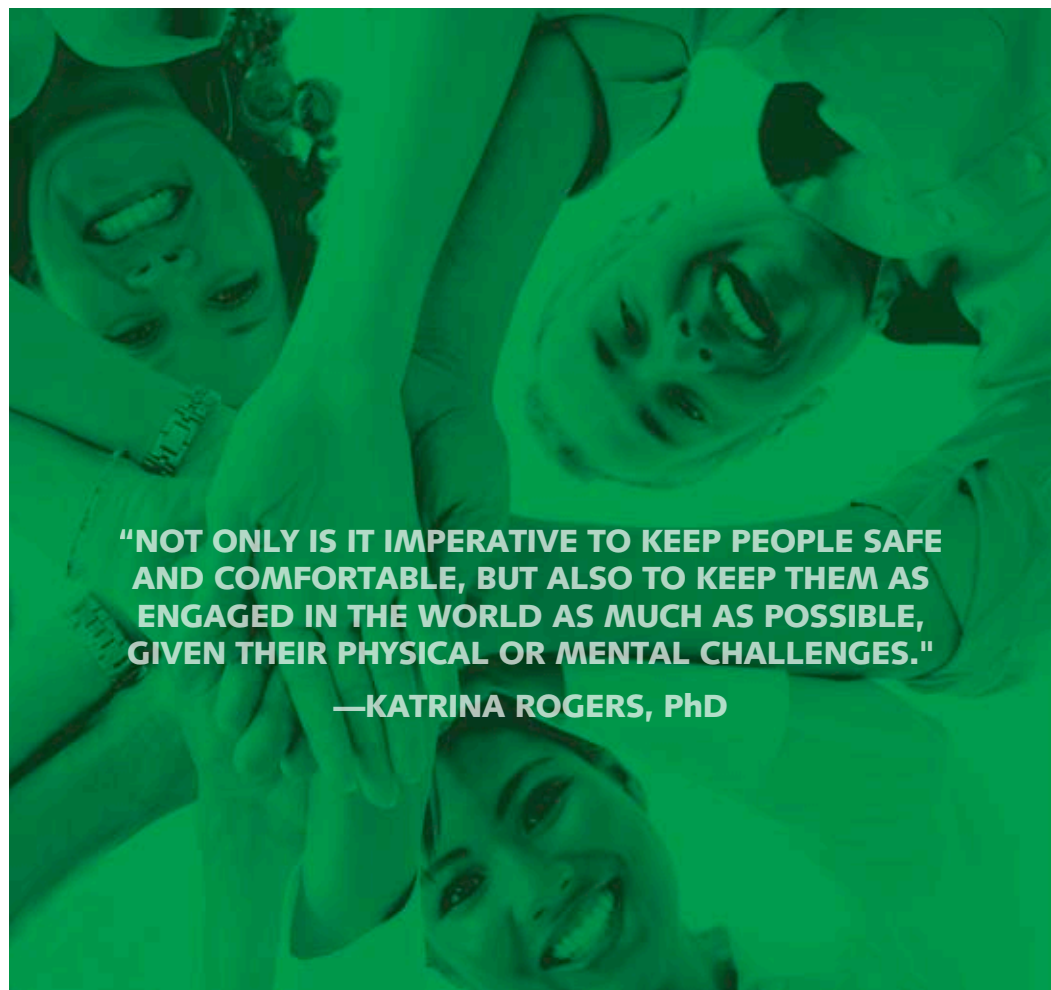
Similarly, an overwhelming array of choices and decisions bombard those who can no longer care for their parents at home. They may have little information about the world of eldercare and find themselves lost in a maze of opinions and suggestions in their effort to educate themselves.

“Our society’s response to the range of eldercare issues is very piecemeal,” Rogers notes. “The lack of sufficient facilities and the lack of a coordinated system of care has produced a wide range in the quality of services found in home care as well as assisted living, dementia care, and nursing facilities.”

We used to assume that when a person began to experience dementia, their quality of life would automatically deteriorate. The positive aging movement deems that unacceptable. “Not only is it imperative to keep people safe and comfortable,” Rogers says, “but also to keep them as engaged in the world as much as possible, given their physical or mental limitations.”

Positive aging evolved from the field of “positive psychology” championed in the 1990s by Martin Seligman, PhD, in such best sellers such as *Learned Optimism* (Knopf, 1991) and *Authentic Happiness* (Free Press, 2002).

More recently, in his book *Positive Aging* (Norton, 2006), Robert Hill identified the following key ingredients for later-life happiness: “taking control of our lives, being active in our communities, being engaged with others, building



**“NOT ONLY IS IT IMPERATIVE TO KEEP PEOPLE SAFE AND COMFORTABLE, BUT ALSO TO KEEP THEM AS ENGAGED IN THE WORLD AS MUCH AS POSSIBLE, GIVEN THEIR PHYSICAL OR MENTAL CHALLENGES.”**

**—KATRINA ROGERS, PhD**

close relationships, and seeking meaning and purpose.”

At the individual level, Hill writes, it becomes a honing of personal gifts and character: “the capacity for love and vocation, courage, interpersonal skill, aesthetic sensibility, perseverance, forgiveness, originality, future mindedness, spirituality, high talent, and wisdom.”

That may seem like a tall order. “The positive aging movement doesn’t say everything is sweetness and light as we get older,” says Rogers. “Quite the opposite. Yet we must create the best situation possible, which involves our own active engagement.” While seeking to facilitate access to resources, invent better systems of eldercare, and educate the population they serve about transitions to come, those in the positive aging movement also seek to promote social justice and to combat cultural

stereotypes that objectify or infantilize the elderly.

To that end, on December 7–10, 2010, Fielding proudly hosts the fourth annual International Conference on Positive Aging in Los Angeles. Here, a highly interactive gathering of diverse leaders will break new ground in shaping a dynamic future for older adults throughout the world.

---

\* *Shock of Gray: The Aging of the World’s Population and How It Pits Young Against Old, Child Against Parent, Worker Against Boss, Company Against Rival and Nation Against Nation*, by Ted C. Fishman, was excerpted in the *New York Times Magazine*, October 17, 2010.

# FIELDING HOSTS THE FOURTH ANNUAL INTERNATIONAL CONFERENCE ON POSITIVE AGING

Fielding Graduate University's Institute for Social Innovation (ISI) is proud to host for the first time the International Conference on Positive Aging. "We're really excited to host the conference in its fourth year and in its first appearance on the West Coast," says Katrina Rogers, PhD, director of ISI and 2010 conference chair. "It's a gathering of people who are passionate about ensuring that older generations thrive in their mature years. The conference energizes everyone because we learn so much from people who come from all over the country. We are grateful to AARP, Rick Moody, and the Life Planning Network for getting the ball rolling four years ago."

The subject of positive aging overlaps

**"IT'S BEEN SAID THAT  
THE BEST WAY TO PREDICT  
THE FUTURE  
IS TO CREATE IT."**

**—HARRY R. MOODY,  
DIRECTOR OF ACADEMIC  
AFFAIRS, AMERICAN  
ASSOCIATION OF RETIRED  
PEOPLE**

beautifully with Fielding's work in adult development, Rogers explains. "Fielding was founded on the premise that a graduate education should be accessible for older, mid-career adults. And ISI has long focused on the topic of creative longevity. The conference will allow us to advance our research in that area."

This year's theme is "Exploring Positive Aging: Designing Practice and Advancing Knowledge." To select speakers and develop topics, Rogers worked with a national advisory group and a planning committee. A distinctive West Coast exuberance runs through the conference agenda.

For example, speaker Kathy Kohner Zuckerman, born in 1941, spent much of her childhood on the beaches of Malibu and started surfing at the age of 15. Zuckerman was the real-life inspiration for the 1957 novel *Gidget: The Little Girl with Big Ideas*. In 1959, Columbia Pictures adapted the novel into a film starring Sandra Dee. Two other *Gidget* films were made as well as a 1965 television series

starring Sally Field and several television movies. Zuckerman still surfs annually to benefit a cancer charity.

Born in 1930, Tippi Hedren's first career was acting. Primarily known for her stunning roles in two Alfred Hitchcock films, *The Birds* and *Marnie*, Hedren reinvented herself later in life as an environmentalist and humanitarian. In 1983, she founded Shambala preserve, an 80-acre wildlife habitat for large wildcats. She has also traveled around the world as a volunteer international relief coordinator for Food for the Hungry.

"We have a standup comedian who wants to try new material about aging," Rogers adds. "And because aging is a multi-sensory experience, we're offering younger people the opportunity to feel what it's like to be 80 through technology that sensitizes them to the barriers older people face that remain invisible to us."

The conference will offer participants life transition tool kits, wellness tool kits, and Active Arts sessions involving music, dance, art, and poetry. Famed tap-dance and jazz legend Ardie Bryant will speak about the enduring pleasure and benefits of creativity.

Keynote speaker Marc Freedman is a celebrated social entrepreneur and the author of *Encore: Finding Work That Matters in the Second Half of Life* and *Prime Time: How Baby Boomers Will Revolutionize Retirement and Transform America*. "In the past decade, Mr. Freedman has emerged as a

Kathy Kohner Zuckerman



leading voice in discussions nationwide about the changing face of retirement," the *Wall Street Journal* stated.

"The period between midlife and old age has become quite confusing for people," Freedman says. "We don't have a coherent cultural sense of what this time in life should be like. Life stages are social construction projects and they take time. For example, the word *adolescence* was coined in 1904, but it took 40 years to see the debut of *Seventeen* magazine. Our society needs to begin now to create new institutions and programs to address this new post-midlife period."



Other heavy hitters include George Vaillant, PhD, Fielding's Outstanding Scholar in Creative Longevity & Wisdom, 2005. Vaillant, (pictured), whose famous 72-year study of 268 men who entered Harvard College in 1937 was discussed in a recent article, "What

Makes Us Happy?" in *The Atlantic Monthly*. The study showed that (1) close, long-lasting, and meaningful relationships are key to positive aging, happiness, and a sense of well-being in our later years, and (2) engagement in purposeful activities that have meaning to us are essential to positive aging and the sense of a life well lived.

The conference will also offer plenary sessions organized around four topics: *community*, *creativity*, *life transitions*, and *wellness*.

*Community*, for conference purposes, is much more than a place; it's a state of mind, a shared vision, a common fate. Community is not only where we live, but also how we act toward each other throughout the seasons of life.

*Creativity* offers a way for older people to focus on their potential rather than their problems. In later life, creativity strengthens morale, enhances physical health, and enriches relationships. Creative engagement also constitutes the greatest legacy older



## CLOSE, LONG-LASTING, AND MEANINGFUL RELATIONSHIPS ARE KEY TO POSITIVE AGING, HAPPINESS, AND A SENSE OF WELL-BEING IN OUR LATER YEARS.

people can leave their children, grandchildren, and society as a whole.

*Life transitions* bring special challenges and opportunities post-midlife, not least because they have been largely ignored until recently. Throughout the second half of life, transitions can involve major shifts in identity, roles, and status as well as intensified questions relating to meaning, purpose, and legacy.

*Wellness* is a lifelong pursuit of health and positive well-being. Its dimensions include the physical, psychological, social, and spiritual as well as a sense of personal continuity and resilience to adapt to a changing environment.

In addition to these four main themes, the conference will offer discussions on the following topics:

- lifelong learning
- caregiving
- spirituality and religion
- sustainability
- entrepreneurship
- technology
- diversity
- intergenerational issues
- public policy
- global and transcultural contexts
- housing
- civic engagement

- life planning
- ageism
- generativity
- workplace issues
- work in the second half of life

The conference venue is located in downtown Los Angeles at the Center for Healthy Communities conference center, which offers 14 large and small meeting rooms. The Center is operated by the Center for Nonprofit Management and funded by the California Endowment. "We're very fortunate to have such a beautiful facility. We applied and were thrilled when they said yes," Rogers recalls. "We appreciate receiving such a significant in-kind donation."

Fielding expects about 400 people to attend, including both audience and speakers. "We're attracting professionals in the field but also individuals facing personal decisions about their own aging process and that of their family members," Rogers says.

"It's very important that we as a society create spaces for this kind of conversation where people can share experiences, information, challenges, and struggles. Ultimately, the conference is about empowering people to make informed decisions."

# CONFERENCE ON POSITIVE AGING **STAR SPEAKERS**



KEYNOTE: **MARC FREEDMAN** CEO, *Civic Ventures*

We still have a life course that was fashioned for a 70-year life span, yet our children will likely live to be 100. We need to understand that this period in life from our mid-50s through our early 80s is a distinct phase now—it has its own integrity. Ironically, the boomers will do a lot of the heavy lifting to create recognition of this new age, but they may not be around to realize the majority of the benefits. Still, we have the chance to fashion a stage of life that all future generations will experience. It may be the boomers' greatest legacy.



**ANDREA GALLAGHER** CEO, *Rethinking Our Future*

Boomers are anxious about the impact of the economic crisis on their future. They're also looking at their parents, who have chronic conditions but are still living longer than the generation that preceded them. There's a much greater prevalence of dementia. Companies are beginning to realize how much they're paying for lost productivity by the boomers who are now caregivers for their parents. These individuals are preoccupied when they're in the office, they have high absenteeism, and they tend to quit their jobs to become fulltime caregivers. This is a huge change.



**TIM CARPENTER** Executive Director, *EngAGE*

I work with low-income seniors to guide them toward healthy behaviors in order to keep them living longer independently. Collaborating with a forward-thinking senior housing developer to design the actual space, we got it right with the Burbank Senior Artists Colony. It houses art studios, an art gallery, a theater and screening room, and digital filmmaking equipment. Residents don't have to be artists to live there, but we coax it out of them.

Suzanne was a retired single mom in her 60s and not doing well mentally or physically when she came to us. We talked her into a writing class and she turned in a short screenplay called *Bandida*. We made it into a successful small film and somehow Ira Glass ended up telling his NPR audience about Suzanne's transformation into an artist.

## **OLD GOLD: THE CREATIVE LONGEVITY AND WISDOM PROJECT**

Sometimes an individual's most creative work doesn't occur until late in life. Paul Cezanne painted his masterpieces at 67 and 68. Louise Bourgeois didn't begin sculpting until she was 60 and created her best pieces at the age of 83.

To explore the creativity and wisdom of older folks, Fielding's Institute for Social Innovation developed a Creative Longevity and Wisdom Project (CLW) in 2004 with a founding grant by Frank Jankovitz and the guidance of faculty member Valerie Bentz, PhD. The goal was to study the contributions older people bring to social leadership roles and to evaluate the social, psychological, and spiritual bases of wisdom, late-life creativity, and positive aging.

For example, older entrepreneurs have become such a presence on the societal scene that Marc Freedman, CEO of Civic Ventures, developed an Encore Fellows Program to support the endeavors of midlife innovators who focus on the environment, education, or personal exploration.

To further explore the collective creative wisdom of elders, CLW fellows, scholars, and faculty have created a collection of relevant papers, available online at [www.fielding.edu](http://www.fielding.edu). Themes include women's experiences of aging, tools for later life development, innovative research methodologies, and aging in the workplace.

Titles include:

**"Does Wisdom Increase with Age?"** by George Vaillant, MD, in *Aging Well* (Little, Brown, 2002), Chapter 9, pp.1–8.

**"Symbolic Processing in the Elderly,"** by Kathryn L. Jepson and Gisela Labouvie-Vief (2007), published in *Everyday Memory and Aging: Current Research and Methodology*, edited by R. L. West and J. D. Sinnott (Springer-Verlag).

**"Justice between Generations: The Recent History of an Idea,"** by Harry R. Moody (2007). A paper presented at the Fielding Graduate University Winter Session, Santa Barbara, January 2007.

Meanwhile, ISI offers continuing education programs in evidence-based coaching, integral studies, and dialogue, deliberation, and public engagement as well as programs for developing sustainable organizations, including nonprofit collaboratives.

In addition, ISI offers scholarships to Fielding students who are conducting research in social change. This support includes the endowed Don Bushnell Scholarship for Organizational and Social Change. The endowed Malcolm Knowles Chair is awarded to a faculty member to work with students on projects that promote principles of adult learning and social change.

ISI is supported by state and national foundations including Kettering, Kellogg, Irvine, and McCune as well as community and family foundations such as Adams, Dutton, and Transition.

"ISI has a track record of support for innovative approaches that create social change in organization and communities," says AARP's Rick Moody. "ISI teams are building a more humane society."

## FIELDING GRADUATE UNIVERSITY: A PIONEER IN MIDLIFE EDUCATION

“Pass it on” has always been a familiar tenet of those in the post-midlife period. And boomers are no exception; they fully intend to impart their experience and wisdom to younger generations. They also wish to continue to learn and grow. Now that they have more time to carve out a second career and channel what they’ve already learned, many are intent on going back to school. Yet grown adults require a different type of education, says Marc Freedman, founder of Experience Corps, America’s largest nonprofit national service program engaging individuals in later life. He points to Fielding Graduate University as “an ideal example of an education model tailored to midlife adults.”

Headquartered in Santa Barbara, California, Fielding was founded in 1974 by a group of distinguished academic leaders and educators who envisioned a nonprofit, nationally recognized graduate school that would serve mid-career professionals.

“We were one of the first, if not the first, universities to concentrate on midlife graduate students,” says Charles McClintock, PhD, dean of Fielding’s School of Human & Organizational Development. “Opinion leaders in higher education consider Fielding a pioneer.”

“Midlife students tend to be anchored in their community by career and family, and their community doesn’t necessarily offer the kind of education they need,” McClintock explains. “A distributed model gives them access from anywhere in the world.”

Today, Fielding is a leading provider of knowledge, new practices, and graduate-level learning opportunities in the fields of clinical and media psychology,

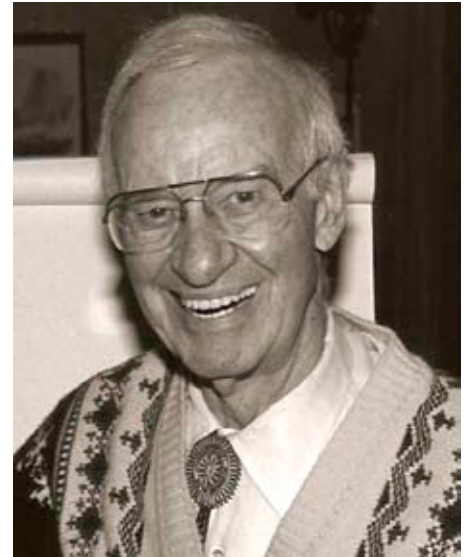
organizational development, and educational leadership. Fielding’s mission is to produce *scholar-practitioners*, enlightened professionals capable of seeing “the big picture” and fueled by the desire to create positive change and social justice through work that brings meaning and integration to their lives.

### LEARNING

Fielding’s methodology stems from the concept of andragogy, or adult learning, as opposed to pedagogy. Andragogy, developed by Malcolm S. Knowles (1913–1997), makes the following assumptions:

- *Adult learners, as opposed to children and young people, need to know why they need to learn something before undertaking to learn it.*
- *Adults need to be responsible for their own decisions and to be treated as capable of self-direction.*
- *Adults have a variety of life experiences, which represent the richest resource for learning.*
- *Adults are ready to learn those things they need to know in order to cope effectively with life situations.*
- *Adults are motivated to learn to the extent that they perceive that it will help them perform tasks they confront in their life situations.*

To this end, Fielding invites students to create their own course of study. “Our students love the fact that Fielding respects their ideas and their experience,” says Judy Stevens-Long, PhD, program director and faculty in the School of Human



Malcolm Knowles, founding HOD faculty member and pioneer in adult learning.

& Organizational Development.

Learning at Fielding is fundamentally relational and collaborative. “We, the faculty, learn as much from them as they learn from us,” Stevens-Long says. “It all happens in an intimate, one-on-one or small group setting.”

In “Doctoral Study: At the Intersection of Age-Related Change and Higher Learning,” published in *Handbook of Adult Development and Learning* by Oxford University Press in 2006, Stevens-Long and Robert Barner, PhD, write that “there is little doubt that over the course of their academic programs, graduate students become more dialectical thinkers, moving toward a meta-systematic level of thought in which they are able to compare, contrast, transform, and synthesize systems of relationships.

“They understand the uncertainty of knowledge and the distinction between

(Continued page 10)

# FIELDING GRADUATE UNIVERSITY: A PIONEER IN MIDLIFE EDUCATION (CONTINUED)

problems that can be resolved with certainty, and those that have no single solution.... In addition, graduate education is associated with perspective transformation, causing students to challenge the assumptions that constrain the way they perceive, understand, and feel about the world."

## BECOMING

In addition to a distinctive learning model that promises intellectual transformation, Fielding offers its students the opportunity to change and grow on a personal level to become scholar-practitioners. "Cognitive changes are intertwined, for some students, with profound personal change including increased patience, empathy and self-confidence," Stevens and Barner write. "Students may begin to experience the self as a less stable, unified entity and more of a continuous dialogue between perspectives."

"Finally," they write, "there is reason to believe that the emotional and cognitive changes that people experience during their graduate education may be associated with... the development of wisdom. Wisdom may be defined as behavior that communicates understanding and caring,...reflection in the midst of action and the acceptance of paradox and ambiguity..."

## STRUCTURE AND OPPORTUNITIES

Fielding sets itself apart from conventional graduate schools that focus on faculty research instead of students. "We don't have tenure at Fielding," McClintock explains. "Many of our faculty members left tenured positions to come here because they wanted to work with students on an individual basis."

Indeed, after he resigned from North Carolina State University in 1979, Malcolm Knowles came to Fielding as a member of

**"OUR STUDENTS LOVE THE FACT THAT FIELDING RESPECTS THEIR IDEAS AND THEIR EXPERIENCE," SAYS JUDY STEVENS-LONG, PhD, FACULTY IN THE SCHOOL OF HUMAN & ORGANIZATIONAL DEVELOPMENT.**

its board and its faculty. "I was tired of serving the university," he said. "I wanted to serve the students instead."

Older students will be especially drawn to Fielding because it welcomes mature professionals. Most PhD programs don't take many people over the age of 30. According to the U.S. Department of Education, between 1987 and 2007, the number of graduate students over 50 grew from approximately 59,000 to 182,000, but it is still a small fraction of the overall graduate student population. "Boomers will need more institutions like Fielding," Freedman says.

## COACHING

Finally, how can an institution like Fielding have a societal impact on this new, reframed exploration of healthy, engaged aging?

For those who would like to help boomers create a path for the second half of life, Fielding offers coaching programs based on two different models: the International Coaching Federation and Integral Coaching. "We offer task- or goal-oriented coaching, but we also try to lay the foundations for coaching emotional development," Stevens-Long says.

"We're in the business of higher education in order to create change and greater social justice," says Katrina Rogers, PhD, director of Fielding Graduate University's Institute for Social Innovation. "We create social change through our graduates. They depart Fielding with a greater understanding of their role in the world and with strong feelings of mission and purpose."



*Founders of Fielding Graduate University, l to r: Hallock Hoffman, Renata Tesch, and founding President Frederic M. Hudson, PhD.*

## CFO's Message

**F**ielding Graduate University has felt some effects of the economic downturn and managed expenses carefully to end the year with a positive financial outcome. In some programs, enrollment did not increase to the level that was initially anticipated and it was necessary to implement cost-saving actions such as a salary and hiring freeze in order to keep costs down. Efforts to bolster program quality and increase organizational capacity are still underway and should result in lasting changes that will improve the student experience.

Net assets increased by \$1.1 million to \$15.9 million. Revenue increased to \$26.6 million, up by \$.6 million due to improved performance of the investment portfolio. Expenses totaled \$25.5 million, up by \$.7 million from the prior year.

Contributions were \$274,471, down slightly from 2009 when the Kuipers Endowment Campaign was underway. Endowment funds and funds acting as endowment have reached \$2.1 million.

Capital expenditures were modest during the year: \$83,000 for computer equipment and \$104,000 for facilities.



*Lisa Lewis, MBA, Fielding VP and Chief Financial Officer, was named one of Santa Barbara County's "Top CFO's, Controllers, & Financial Executives" in a special edition of the Pacific Coast Business Times (August 2010).*

## STATEMENT OF ACTIVITIES

FOR THE YEAR ENDED JUNE 30, 2010

	TEMPORARILY UNRESTRICTED	PERMANENTLY RESTRICTED	RESTRICTED	TOTAL
<b>Revenues</b>				
Tuition	\$ 25,516,719	\$ -	\$ -	\$ 25,516,719
Student Fees	678,576	-	-	678,576
Less: Allowance for Scholarship	(282,656)	-	-	(282,656)
Net Tuition, Fees and Other Support	25,912,639	-	-	25,912,639
Contributions	127,856	99,430	47,185	274,471
Auxiliary Enterprise Income	93,495	-	-	93,495
Investment Income	244,782	389	-	245,171
Other Income	33,658	-	-	33,658
Assets Released from Restrictions	133,858	(133,858)	-	-
<b>Total Revenues, Gains and Other Support</b>	<b>\$ 26,546,288</b>	<b>\$ (34,039)</b>	<b>\$ 47,185</b>	<b>\$ 26,559,434</b>
<b>Expenditures</b>				
Education & General				
Instruction	\$ 14,545,311	\$ -	\$ -	14,545,311
Research	435,915	-	-	435,915
Academic Support	945,201	-	-	945,201
Student Services	2,841,220	-	-	2,841,220
Institutional Support and G & A	5,498,874	-	-	5,498,874
Operation & Maintenance of Plant	365,002	-	-	365,002
Depreciation and amortization	496,941	-	-	496,941
Interest	263,808	-	-	263,808
Auxiliary Enterprises	90,908	-	-	90,908
<b>Total Expenditures</b>	<b>25,483,180</b>	<b>-</b>	<b>-</b>	<b>25,483,180</b>
<b>Changes in Net Assets</b>	<b>1,063,108</b>	<b>(34,039)</b>	<b>47,185</b>	<b>1,076,254</b>
<b>Net Assets at June 30, 2009</b>	<b>12,716,116</b>	<b>734,118</b>	<b>1,385,144</b>	<b>14,835,378</b>
<b>Net Assets at June 30, 2010</b>	<b>\$ 13,779,224</b>	<b>\$ 700,079</b>	<b>\$ 1,432,329</b>	<b>\$ 15,911,632</b>

## FIELDING FACTS

### FOUNDED

March 11, 1974, in Santa Barbara, California, as a 501(c)(3) nonprofit organization

### INSTITUTIONAL ACCREDITATION

Accrediting Commission for Senior Colleges and Universities of the Western Association of Schools and Colleges, WASC, 985 Atlantic Avenue, Suite 100, Alameda CA 94501, (510) 748-9001

### UNIVERSITY LEADERSHIP TEAM

President—Richard S. Meyers, PhD  
 Interim Provost—Gloria Willingham, PhD  
 Chief Financial Officer—Lisa Lewis, MBA  
 Vice President, Human Resources and Administration—  
 Anna McDonald, PhD  
 Vice President for Advancement and Development—  
 David Edelman, MBA

### SCHOOLS & PROGRAMS

#### School of Psychology

Interim Dean—Gerardo Rodriguez-Menendez, PhD  
 PhD in Clinical Psychology; optional concentrations in Forensic Psychology, Health Psychology, Violence Prevention and Control, Neuropsychology, and Parent Infant Mental Health  
 PhD in Media Psychology; optional concentration in Forensic Psychology

MA in Media Psychology and Social Change, postdoctoral and postgraduate certificates; Neuropsychology, Respecialization in Clinical Psychology

#### School of Educational Leadership & Change

Dean—Judy Witt, PhD  
 EdD; optional concentrations in Leadership of Higher Education Systems, Media Studies, Community Leadership & Change  
 MA in Collaborative Educational Leadership; optional concentrations in Charter School Leadership, Preliminary Administrative Services Credential (PASC)  
 Certificate programs for PASC and Teaching in the Virtual Classroom

#### School of Human & Organizational Development

Dean—Charles McClintock, PhD  
 PhD in Human & Organizational Systems  
 PhD in Human Development  
 MA in Organizational Management and Development; optional concentration in Integral Studies  
 Certificate programs in Evidence Based Coaching; Dialogue, Deliberation, and Public Engagement; Integral Studies; Organizational Management and Development  
 Custom and corporate programs

## QUICK FACTS

### Student Body Demographics—Aggregated data from all degree-granting programs as of August 2010

**Enrollment:** 1,327  
**Age Range:** 24–76  
**Ethnicity:** Native American 1.7%, Asian 4.6%, African American 13.1%, Caucasian 64.4%, Hispanic 5.1%, Multi-Ethnic 5.7%, Unknown 5.4%

**Alumni:** 3,400 in 50 states, Washington, DC, and 26 countries  
**Faculty:** Core faculty 107, Adjunct faculty 41  
**Staff in Santa Barbara:** 94

### SCHOOL OF HUMAN & ORGANIZATIONAL DEVELOPMENT

PROGRAM	ENROLLMENT	FULL-TIME FACULTY	PART TIME & ADJUNCT FACULTY
PhD in Human and Organizational Systems PhD in Human Development	409	23	11
MA in Organization Management and Development	104	5	6

### SCHOOL OF PSYCHOLOGY

PROGRAM	ENROLLMENT	FULL-TIME FACULTY	PART TIME & ADJUNCT FACULTY
PhD in Clinical Psychology PhD in Media Psychology	489	31	16

### SCHOOL OF EDUCATIONAL LEADERSHIP & CHANGE

PROGRAM	ENROLLMENT	FULL-TIME FACULTY	PART TIME & ADJUNCT FACULTY
EdD	239	18	5
MA in Collaborative Educational Leadership	58	1	13

Data is approximate and based on most recent reporting available August 2010.

## CONTRIBUTORS

### WITH APPRECIATION TO OUR CONTRIBUTORS

As a private nonprofit graduate university, Fielding depends on the generosity of its supporters to expand and advance new ideas and opportunities that benefit our students, alumni, and the university as a whole. We thank the many contributors who support our work through their generous donations. The following reflects new gifts and new pledges received from October 1, 2009, through October 22, 2010. Please call our attention to any errors or omissions by contacting Frances Goodrow at fgoodrow@fielding.edu or 805.898.2951.

### TRUSTEES' CIRCLE

#### GOLD

\$25,000–\$49,999

Sue B. Reamer

#### SILVER

\$10,000–\$24,999

Full Circle Living  
Montecito Bank & Trust  
Margarita & Herb Rosenthal

### PRESIDENT'S CIRCLE

#### CHAMPIONS

\$5,000–\$9,999

Julie Anding & Lisa  
Kornetsky  
Harley-Davidson  
Foundation, Inc.  
Sara Miller McCune  
Yakko & Richard S. Meyers  
Carol Sanger  
Charles N. & Edith Seashore

#### PACESETTERS

\$1,000–\$2,499

Suzanne Baer  
Anna DiStefano  
Tiffany Field  
Patricia & John Hodges  
Deborah Karoff  
Martha & Peter Karoff  
Charles McClintock  
Weston Milliken  
Paulette Pasciuti  
Linda Powell  
Sage Ann Scheer  
Robert Silverman  
Margaret Siroc  
St. Croix Valley Foundation  
Ronald J. Stratten  
Ted Takamura  
Kathy Tiner &  
Daniel R. Sewell  
Raymond J. Trybus  
Nancy G. Unobskey  
Joanne B. Veroff (d)  
Dennis White  
Pamela Young

#### LEADERS

\$2,500–\$4,999

AARP  
Adams Legacy  
Foundation, Inc.  
Bo Gyllenpalm  
Anne Kratz  
Judith L. & Jerry Kuipers  
Magic Feet  
Menschel Family Foundation  
Patricia Oelrich  
Pfizer Foundation Matching  
Gifts Program  
Gloria Willingham

### FOUNDERS' CIRCLE

*Fielding thanks the members of the Founders' Circle who have generously designated Fielding in their wills or have made a planned gift to ensure Fielding's future.*

Natalie Ammarell  
Peggy Azad  
Linda & Marv Branch  
Lynn Bursten  
Anna DiStefano  
D'Ann Downey  
Nanine Ewing  
Kathy Geller  
Tracy Gibbons  
John Gladfelter  
Sharon Hawley

Anne Kratz  
Sarah N. MacDougall  
Sara Miller McCune  
Mary Lou Michael  
Eileen Morgan  
Christi Olson  
Wendy Overend  
Andrea L. Shields  
Judith Silverstein  
Charlotte &  
Roland (Roc) Troike

### INNOVATORS

\$500–\$999

Pauline Albert  
Marcella Benson-Quaziana  
Sonja Ferreras-Sullivan  
LaNelle Ford  
Elizabeth A. Hardy  
Sherry L. Hatcher  
Linda Honold  
Kae Hutchison  
Harriet G. Jenkins  
Shoko Kashiya  
Audrey & William H. Maehl  
Michael McElwee  
Virginia Morrison  
Martha Sherman  
Gine Thomes-Cotter  
Leslie Froeb &  
Scott C. Turner  
Xerox Foundation Matching  
Gifts Program

### CHANGEMAKERS

\$250–\$499

Arizona Community  
Foundation  
Rodney J. Beaulieu  
John Bennett  
Carla Billings  
Victor Cheers  
J. Rick Day/Day Family  
Foundation  
Patricia Evans  
Bernardo Garcia  
Kathy Geller  
Sandra Gill  
Maria Guerin  
Linda Hulbert  
Anzi Jacobs  
Leo F. Johnson  
Anneli Merich  
Jeanette M. Moore  
Jerry P. Nims  
Carl Oliver  
Kathleen Randolph  
Marie Reilly  
Judith Schoenholtz-Read  
James Schiller  
Carol Sommerfield  
Vera Teller  
Teya Walkker

### LIFELONG LEARNERS

\$100–\$249

Dorothy & Niels  
Agger-Gupta  
Holly Algood  
Natalie Ammarell  
Janet Baldwin Anderson  
Leslie Adler  
Peggy Azad  
Leonard M. Baca  
Richard Beaver  
Valerie Bentz  
Marion Bilich  
Judy Bordin  
Chalintorn Burian  
Joseph P. Bush  
Maximiliano Camarillo  
Linda Campany  
Barbara Carnes  
Elizabeth Cole  
College Access Foundation  
Peter Donnelly  
Jennifer Edwards  
Kathleen Edwards  
Richard Flacks  
Linda Ford  
Myrna Frank  
Marilyn Freimuth Baron  
Frank Friedlander  
Jeanne Gavrin  
Frances Goodrow  
Anthony F. Greene  
Janet Grossman  
Paul Gunser  
Cheri Gurse & Carol Keator  
Melinda Hall  
Kenneth Hapke  
Natan HarPaz  
Betty & Stanley Hatch  
Raymond Hawkins  
Carol Hershey  
Kim Hoffman  
Michael Horne  
William Husson  
Dilys J. Jones  
J. Gwen Kennedy  
Zieva Konvisser  
Stefan Kramer  
Kenneth & Patricia Krueger  
Carmen D. Kuchera  
Tony LeTrent-Jones  
Lisa Lewis  
Naomi Lippin  
Julia Lopez  
Sarah MacDougall  
Dorcas McDonald  
Irene McHenry  
Harriet Miller (d)  
Nancy Molter  
Donald Mroz  
Gregory J. Murrey  
Mary Nicholas  
Mette Norgaard  
Beverly Palley  
Rena Palloff

Henry Provost  
David Rehorick  
Maria Ritter  
Ruth Rymer  
Nancy & Paul Shaw  
Judith Silverstein  
Odis Simmons  
Paula Singer  
Leila Sullivan  
Kenneth J. Sylvester  
Roland Troike  
Mary Ann von Glinow  
Nancy Weisman  
Cynthia Williams  
Arlene Falk Withers  
Linda & Ernest M. Zampelli  
Andrea Zintz

### SCHOLAR-PRACTITIONERS

Up to \$99

Cheryl Brown  
Juanita Brown  
Robin Cash  
Ann Clancy  
Carnzu A. Clark  
Lawrence J. Cozzens  
Valerie Dhanens  
S. Nelson Gray  
Melanie Guste  
Jeri Lynn Hogg  
Faustine Jones-Wilson  
Maxine Junge  
Marsha P. Kalina  
Frederick Kurz  
Linda H. Lewis  
Katherine Lui  
Arieahn Matamona-  
Bennett  
Mary Maxwell  
Shirley & Stanford  
McDonald  
Mary Lou Michael  
Edna Mordecai  
Susan & Max Neufeldt  
Suzanne Noble  
Loretta Potter  
Ida Pound  
Rita Resnick  
Pamela Rutledge  
Steven Schapiro  
Lois Sculco/Sisters of Charity  
David Slaughter  
Hinde Socol  
Timothy Stanton  
DeAnne Taylor  
Terry Timmins  
United Technologies  
Matching Gifts Program  
Dawn Upham  
Greta Walters  
Pat & Joe Wheatley  
Leni Wildflower  
Allie Williams

**GIFTS MADE IN HONOR**

Don Bushnell  
From Anne Kratz

Anna DiStefano  
From Holly Algood, Natalie Ammarell, Janet B. Anderson, Suzanne Baer, Richard Beaver, Marcella Benson-Quaziana, Valerie Bentz, Carla Billings, Linda Campy, Barbara Carnes, Carnzu A. Clark, Valerie Dhanens, Kathleen Edwards, Richard Flacks, Frank Friedlander, Bernardo Garcia, Kathy Geller, Frances Goodrow, Janet Grossman, Maria Guerin, Paul Gunser, Cheri Gurse & Carol Keator, Bo Gyllenpalm, Melinda Hall, Kenneth Hapke, Elizabeth Hardy, Natan HarPaz, Stan & Betty Hatch, Kim Hoffman, Jerri Lynn Hogg, Linda Honold, Michael Horne, Dilys J. Jones, Faustine Jones-Wilson, Maxine Junge, Deborah Karoff, Peter & Martha Karoff, Shoko Kashiyama, Zieva Konvisser, Stefan Kramer, Anne Kratz, Kenneth & Patricia Kruger, Judy & Jerry Kuipers, Linda H. Lewis, Lisa Lewis, Naomi Lippin, Julia Lopez, Sarah MacDougall, William & Audrey Maehl, Arieahn Matamonasa-Bennett, Mary Maxwell, Charles McClintock, Irene McHenry, Anneli Merich, Richard & Yakko Meyers, Mary Lou Michael, Nancy Molter, Jeanette M. Moore, Max & Susan Neufeldt, Loretta Potter, Linda Powell, Kathleen Randolph, Sue Reamer, Marie Reilly, Ruth Rymer, James Schiller,

Lois Sculco, Charlie & Edie Seashore, Kathy Tiner & Daniel Sewell, Martha Sherman, Odis Simmons, David Slaughter, Leila Sullivan, Ted Takamura, DeAnne Taylor, Vera Teller, Gine Thomes-Cotter, Terry Timmins, Jody Veroff, Mary Ann von Glinow, Teya Walkker, Greta Walters, Pat & Joe Wheatley, Dennis White, Allie Williams, Cynthia Williams, Gloria J. Willingham, Pamela Young, Ernest & Linda Zampelli

LaNelle Ford  
From Anne Kratz

Dean Kratz  
From Anne Kratz

Linda Lewis  
From John Bennett

Richard Meyers  
From Judith L. & Jerry Kuipers

Richard & Yakko Meyers  
From Anne Kratz

Georgia Persons  
From Marie Reilly

Charlie Seashore  
From Anne Kratz

Charlie & Edie Seashore  
From John Bennett

Nicola Smith  
From Anne Kratz

Sue Reamer, Anna DiStefano, Judy Stevens-Long, Sylvia Williams  
From Anne Kratz

Jackie Webb  
From Kathleen Randolph

**REFERRALS**

*Sincere appreciation goes to the following individuals for referring entering students during the previous three terms.*

**Alumni**

Ruth Ackerman  
Niels Agger-Gupta  
Tracey Anderson  
Sue Berger  
Mary Beth Williams  
Jackie Binkert  
Willis Blake  
Susan Brown  
John Burlison  
Karen Caesar-Beaubien  
Irvin Clark  
Shawn Cornett-MacLean  
Peter Deison  
Sandy Dixon  
Susan Dunn  
Leslie Ellis  
Karen Estrella  
Mary Ferguson-Pare  
Lolo Freedle  
Seleeda Grantum  
Matthew Heim  
Cathy Hence  
Mike Hill  
Anita Jensen  
Monica Kmak  
Tracy Knight  
Zieva Konvisser  
Ellen Krohne  
Alice MacGillivray  
Paige Marrs  
Janet Martin-Graham  
Kris Mayer  
Irene McHenry  
Michael Milbier  
Donald Mroz  
Adair Nagata  
Phyllis Nichols  
Bryon Noon  
Kevin Nourse

Bernie Novokowsky  
Joy Richards  
Ref Rodriguez  
Jennifer Schwanberg  
Tammy Seibert  
Brad Sewick  
Anthony Spina  
Ank Stuyfzand  
Kathryn Taft  
Margaret Tennant  
Joseph Troiani  
Gary Wagenheim  
Diana Waters

**Faculty**

Dottie Agger-Gupta  
Maui Bonner  
Jenny Edwards  
Kitty Epstein  
Gary Garbe  
AGee Greene  
Larry Hirschhorn  
Szabi Ishtai-Zee  
Lee Mahon  
Teresa Marquez-Lopez  
Silvia Martinez  
Keith Melville  
Harry Moody  
Virginia Morrison  
Charlie Seashore  
Jeremy Shapiro  
Diane Smart  
Jerry Snow  
Judy Stevens-Long  
Leni Wildflower  
Judy Witt

**Staff**

Cheri Gurse  
Violet Hatipoglu  
Carmen Kuchera

**Students**

Sita Aiello  
Susan Auger  
Candace Benton  
Sarah Blackmun-Eskow

John Inman  
Jeremy Kemp  
Louise Korver  
Carol Laberge  
Celeste Lynn  
Petrina McGrath  
Lynn Mitchell  
Bill Redford  
Nancy Reynolds  
Alicia Sanders  
Blair Slaughter  
Luke Wiegell

**Friends**

Judith Bamburg  
Guy Bell  
Paul Bisson  
Diane Brennan  
Ellen Broidy  
Kathryn Brown-Tracy  
David Brule  
David Bush  
Beverly Clampett  
Barbara Clark  
Argentine Craig  
J. Day  
Jan Drake  
Shannon Fox  
Kathleen Gelineau  
Erik Gregory  
Misty LaCour  
Bob Lasiewicz  
Bernie Luskin  
James Macsary  
Mary Madden  
Carole McNamee  
Wayne Mellinger  
Terry Mueller  
Jim Myers  
Peter Park  
Robert Pasick  
Myron Rogers  
Wanda Shaffer  
Rebecca Sinclair  
Richard Townsend  
Ellen Walker  
Melisa Watkins

**GIFTS MADE IN MEMORY**

Anne Alonso  
From Marilyn Freimuth Baron

C. Edwin Baker  
From Carol Sanger

Donna Lucci Bushnell  
From Rodney Beaulieu

Susan Cortez  
From Anna DiStefano

Libby Douvan  
From Suzanne Noble, Leni Wildflower

Oolah B. Evans  
From Patricia Evans

Marie Fielder  
From Rodney Beaulieu, Harriet G. Jenkins, Gine Thomes-Cotter

Dorothy Fugle  
From Sherry Hatcher

Eugene Kerfoot  
From Maximiliano Camarillo

Malcolm Knowles  
From Jennifer Edwards, Linda Hulbert, Andrea Zintz

Barbara Kratz  
From Anne Kratz

Pearl Marcus  
From Sherry Hatcher

Clint Phillips  
From Roc Troike

**FIRST ENDOWED CHAIR AWARDED TO CHARLES N. SEASHORE, PHD**

The Malcolm Knowles Chair in Adult Learning—Fielding's first endowed faculty chair—was presented to Charles N. Seashore, PhD, at Winter Session 2010, shown here, third from left, with President Richard Meyers; Malcolm Knowles's daughter, Barbara Hartl; and HOD dean Charles McClintock. The thoughtful generosity of Fielding alumni, faculty, and students who donated to the Knowles Chair endowment fund—including former students of Malcolm Knowles—helped make the award possible. Earnings from the endowed fund will be used by Dr. Seashore to engage doctoral students in projects that embody the principles and honor the legacy of Malcolm Knowles, who was a founding HOD faculty member and a renowned scholar in the area of adult learning and social change.

## FIELDING SCHOLARSHIPS & FELLOWSHIPS

### ISI SCHOLARS

Henry Fowler (ELC)	A Study of the Effects of Navajo Culture on Navajo Student Performance in Mathematics
Terry Hildebrandt (HOD)	From Anti-Gay to Pro-Gay: Examining Transformation in Heterosexual Male Evangelical Christians
Yabome Gilpin-Jackson (HOD)	Growing Out of Trauma: Understanding Posttraumatic Growth (PTG) from the Perspective of West African War Survivors
Kathy Kaya (HOD)	Liberation Through Learning: An Exploration of How Sansei women understand their Experience of Oppression
Kay Phelps (ELC)	Building Learning Communities with Navajo and Ute Mountain Ute families of Early Elementary Schoolchildren

### ELIZABETH DOUVAN AWARD

Jacque Goulbourne (HOD)	Acculturation to Avert Failure of Medical Students
Jeff Leinaweaver (HOD)	Dialogues in Sustainability and Self

### DON BUSHNELL ENDOWED SCHOLARSHIP FOR SOCIAL & ORGANIZATIONAL CHANGE

Mackenzie Glander	Impact of Telecenter Tools on Well-being and Community: The Malian Experience Sustainability as Progress in the Age of Integration
-------------------	--

### CREATIVE LONGEVITY & WISDOM STUDENT SCHOLARS

Cathy Macdonald	Re-engagement in Music in Later Life
Carter Haynes	Later Life Development in the Philosophy of Thomas Merton
Miki Berg	Self-image for Women in Later Life

### CREATIVE LONGEVITY & WISDOM FELLOWS

Pauline Albert	The Wisdom of St. Francis
Natalie Ammarell	Organizations for Helping the Elderly
Suzanne Baer	Creative Aging in Women
Evelyn Torton Beck (PSY)	Aging Women's Cross Cultural Dance Circles
John Bennett	Wisdom Leadership
Katherine Bolman	Aging, the Arts and Special Needs
Linda Branch	Women Over Fifty and Their Dogs
Gloria Cordova	Aging and Culture Identity Among Chicanas of Northern New Mexico
Bill Dailey	Advocacy for Handicapped Elderly
Elena Gillespie	Art, Music and Embodied Resonance in Development Wisdom
Diana Haladay	Creativity Among the Elderly
Wan Hamachi	Cross Cultural Creativity and Symbols of Wisdom
Rita Lustgarten	Feminine Wisdom in Women Leaders
Donald Lynd	Cross Generational Development and the Perspective of Elders
Martha Manning	International Communities for the Elderly
Laura Markos	Creative Writing and Development in Aging
Chris Martinek	Advocacy for the Elderly in Community Settings
Cynthia Miller	Meaningful Work over the Life Course
Pam Porath	Wisdom Development
Laurie Potter (PSY)	Life Transitions
Patrick Roden	Creativity and Dealing with Physical Infirmities in Aging
Connie Ross	Travel and Learning in Third-quarter Populations
Beverly Schydrowsky (PSY)	Successful Aging
Sydney Scott (ELC)	Individual's Advancement to Upper Levels of Ego
Jeraline Shields	Cross Cultural Wisdom Practices Among the Elderly
Susan Skjei	Contemplative Practices and Wise Leadership
Jill Squire (ELC)	Impacts of Aging on the Creativity of Contemporary Female Artists
Bo Tep	Buddhist Wisdom Development
Dudley Tower	Surviving Cancer and Creativity in Men Over 60
Barbara Volger	Creativity and Shame Among Jewish Aging Women
Pamela Young	Creativity Generativity in Aging Women

### OTHER SCHOLARSHIPS & AWARDS

Freida Fromm-Reichmann Award	Brent E. Hopkins (PSY student)
Louis & Adele Osherson Fellows	Lynn Ramsson and Sonia Alvarez-Robinson (HOD students)
Fielding Dreamfish Fellows	Charlyn Fareed Green, PhD (HOD 06), and Jim MacQueen
LaNelle & Dennis Ford Scholarship	Kimberly Thompson (PSY student)
Psychology Honors Award	Donna Cook (PSY student)

## FIELDING GRADUATE UNIVERSITY BOARD OF TRUSTEES

### OFFICERS

#### CHAIR

**Michael B. Goldstein, JD**  
Washington, DC  
Partner, Dow Lohnes

#### VICE CHAIR

**Frederick B. Phillips, PsyD (PSY 78)**  
Washington, DC  
Founder, Progressive Life Center, Inc.

#### TREASURER

**Russell Goodman, MBA**  
Oxnard, CA  
President, Sares-Regis Group

#### TREASURER

**Suzanne Baer, PhD (HOD 04)**  
New York, NY  
Consultant

#### IMMEDIATE PAST CHAIR

**James H. Muren, PhD**  
New York, NY  
Vice President, Manufacturing, Pfizer (retired)

#### **Richard S. Meyers, PhD**

Santa Barbara, CA  
President, Fielding Graduate University

### TRUSTEES

#### **Marlene Canter**

Los Angeles, CA  
Consultant

#### **Donna DeRoo**

Clovis, CA  
Student, Fielding Graduate University

#### **Bo Gyllenpalm, PhD (HOD 95)**

Nynashamn, Sweden  
President, Situational Services Nordic AB

#### **Anthony H. Holliday Jr., JD, LLM**

Delray Beach, FL  
Faculty, Fielding Graduate University

#### **E. Nancy Markle, MS**

Sarasota, FL  
Americas Chief Information Officer,  
Arthur Anderson (retired)

#### **Patricia A. Oelrich, CPA**

Princeton, NJ  
Consultant, Enterprise Risk Management  
Services

#### **Nancy Owen Moss, PhD (PSY 86)**

San Marino, CA  
Psychologist

#### **Paulette Pasciuti**

Los Angeles, CA  
Director of Development, Keck School of  
Medicine, University of Southern California

#### **Joan Read, PhD**

Atlanta, GA  
Faculty, Fielding Graduate University

#### **Yoke San Reynolds, MBA**

Charlottesville, VA  
Vice President and Chief Financial Officer,  
University of Virginia

#### **Constance Shafran, PhD (PSY 95)**

Malibu, CA  
Psychologist

#### **Nancy S. Shapiro, PhD**

Potomac, MD  
Associate Vice Chancellor of Academic Affairs,  
University System of Maryland

#### **Margaret Sirot, MS**

Stamford, CT  
Executive Director and President,  
Stamford Sailing Foundation

#### **Ronald J. Stratten, MS**

Indianapolis, IN  
President, Stratten Solution Consulting

#### **Gabrielle Wanamaker**

Philadelphia, PA  
Student, Fielding Graduate University;  
Principal, Trustworks



#### NEW BOARD MEMBER

#### Marlene Canter

Marlene Canter served from 2001 to 2008 on the Los Angeles City Board of Education. She was board president of the Los Angeles Unified School District from 2005 to 2007 and chaired the new Charters and Innovation Committee. Canter began her career as a special education teacher and cofounded and served as the co-CEO of Canter & Associates. The company was sold to Sylvan Learning Systems, which became Laureate Education, Inc. It is a leading teacher-training organization that has trained more than 1 million K-12 teachers worldwide and developed an extensive catalogue of professional development programs, courseware, and resource material for teachers, administrators, and parents. Marlene has a reputation as one of the most knowledgeable people in the field of K-12 education.



#### NEW BOARD MEMBER

#### Donna DeRoo

Donna DeRoo is a doctoral student in Fielding's School of Educational Leadership & Change and the assistant director for the Central California Center for Health and Human Services at California State University, Fresno. With over 15 years' experience in nonprofit management, she'll be of great assistance as Fielding develops its fundraising capacity.

## FACULTY: *Research & Practice*

**RICHARD APPELBAUM, PhD (HOD)**, affiliated with the School of Human & Organizational Development (HOD), has been named to one of two John D. and Catherine T. MacArthur Foundation chairs at the University of California, Santa Barbara (UCSB). He and UCSB history professor Nelson Lichtenstein will pursue joint programming and research on the theme of human rights in the workplace at home and abroad.

**FOUR ARROWS, aka Don Trent Jacobs, PhD, EdD (ELC)**, has written a new novel, *Last Song of the Whales*, published by Savant Books.

**JOSEPH P. BUSH, PhD (PSY)**, has been named a fellow of the Society of Pediatric Psychology (APA Division 54).

**KAREN DILL, PhD (PSY)**, was interviewed by *USA Today* in December 2009 about the Salahi's, the gate crashers at the White House state dinner. She was asked to describe the media event from a psychological prospective.



**JENNY EDWARDS, PhD (ELC)**, has published a new book, *Inviting Students to Learn: 100 Tips for Talking Effectively with Your Students* (ASCD, 2010).

**CHRISTINE HO, PhD (HOD)**, presented a paper titled "Immigrant Detention Reform" in Merida, Mexico at the annual conference of the Society for Applied Anthropology. The paper was based on her work with Amnesty International to lobby members of the U.S. Congress.

**JEAN-PIERRE ISBOUITS, LittD (PSY)**, wrote and will direct a feature film, *Four Saints*, that will begin shooting in Calgary, Alberta, Canada, in March 2011. Selma Blair and Arnold Vosloo are among the Hollywood

stars who have been cast in the World War I drama. Media psychology alumna **LESLIE McMICHAEL, PhD (PSY 08)**, is the executive producer. The screenplay is based on the story of four Allied nurses who established an unauthorized medical post near the front lines in Belgium, saving the lives of countless soldiers who would not have survived difficult transport to field hospitals in the rear.

**LEONARD KOZIOL, PsyD (NRO), and DEBORAH BUDDING'S (CT NRO 04) *Subcortical Structures and Cognition*** (Springer) was lauded in a review by William MacAllister in the November 2009 issue of the *Clinical Neuropsychologist*.

**BARBARA MINK, EdD (HOD)**, has been appointed to the advisory committee of the Free Minds Project at the University of Texas. Free Minds provides low-income Central Texas adults with a chance to "jumpstart" their college education by studying important works of literature, history, philosophy, and art.



*Pictured l. to r., Frances Marquez, Gallaudet University; Juan Sepúlveda, director, White House Initiative on Educational Excellence for Hispanic Americans; and Teresa Marquez-Lopez.*

**TERESA MARQUEZ-LOPEZ, EdD (ELC)**, was on the panel "History, Schooling, and Outcomes" at the first Latino Education and Advocacy Day summit at California State University, San Bernardino.

In October 2010, Marquez-Lopez was honored to be present at the White House when President Obama signed the executive order on Educational Excellence for Hispanics following the National Education Summit. Guests from throughout the United States

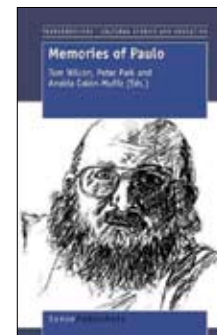
came to learn about President Obama's new initiatives and to discuss opportunities for collaboration. She had the privilege of being a guest and having the opportunity to present Fielding Graduate University's outstanding programs.

**CHARLES McCLINTOCK, PhD (Dean, HOD), JEREMY SHAPIRO, PhD (HOD), JEAN-PIERRE ISBOUITS, LittD (PSY)**, and Orlando Taylor, PhD (Chicago School of Professional Psychology), presented a panel at the International Conference in New Directions in the Humanities. They examined a multidisciplinary model of doctoral education that combined the humanities and the social sciences in support of social change.

In October, McClintock was appointed to the Board of Trustees of the Santa Barbara and Ventura Colleges of Law. He joins RACHEL BISHAR, PhD (PSY 07), as a new trustee along with Fielding's VP for human resources ANNA McDONALD, PhD, who is a continuing trustee.

**ANNABELLE NELSON, PhD (HOD)**, presented her work on educating disadvantaged youth about making healthy choices in underserved Phoenix communities at the Eighth Annual Southwest Interdisciplinary Research Conference titled "Health Disparities: A Global Challenge, Local Perspectives."

**JASON OHLER, PhD (PSY)**, was made Professor Emeritus, Educational Technology, at the University of Alaska.



**PETER PARK, PhD (HOD emeritus)**, is an editor of *Memories of Paulo* (Sense Publishers) in which contributors reflect on the life and work of Paulo Freire.



HOD Dean Charles McClintock with Nancy Pelosi, Speaker of the House of Representatives. McClintock frequently entertains Santa Barbara guests at special events for worthy causes.

**W. BARNETT PEARCE, PhD (HOD emeritus)**, was coauthor of a 1980 book that has been honored by the Language and Social Interaction Division of the National Communication Association. The award recognizes scholarly merit, contribution to knowledge in language, and impact on the discipline. The book, *Communication, Action and Meaning: The Creation of Social Realities* (Praeger), was the first book-length report of the development of the theory of the "coordinated management of meaning," now a significant theory in the discipline of communication.

**GILBERT REYES, PhD (PSY)**, has been elected president of APA's Division 48, the Society for the Study of Peace, Conflict, and Violence. Reyes was one of the panelists for the July 2010 webinar "Assisting Children and Families Affected by the Gulf Oil Spill" presented by the NCTSN Terrorism and Disaster Network Committee and the Secondary Traumatic Stress Committee. They discussed concerns affecting children and families living in the Gulf region, activities and resources that are available, what is being planned for long-term recovery, and how mental health providers and rescue workers can protect themselves from burnout and secondary stress.

**KATRINA ROGERS, PhD (HOD), and CHARLES MCCLINTOCK, PhD (Dean, HOD)**, published their work on developing the Institute for Social Innovation (ISI), "Higher Education and Community Engagement: Strengthening Democracy through a University Institute," in the 2010 issue of the *Higher Education Exchange*, a publication of the Kettering Foundation.

Rogers has a chapter, "Leading Sustainability," in the upcoming *Advances in Global Leadership*, Vol. 6 (Emerald Group), edited by W. H. Mobley, M. Li, and Y. Wang. She has also been appointed to the board of the Public Dialogue Consortium (PDC). PDC works with diverse communities to bring multiple views and perspectives into public engagement processes.

**JUDY STEVENS-LONG, PhD (HOD), STEVEN SCHAPIRO, EdD (HOD), and CHARLES MCCLINTOCK, PhD (Dean HOD)**, have published the results of their Fielding-sponsored research in a forthcoming volume of *Adult Education Quarterly*. Their article, "Passionate Scholars: Transformative Learning in Doctoral Education," is based on research with alumni of the HOD doctoral program.

**KATHY TINER, PhD (ELC), and KATHRYN MENDOZA, (ELC student)**, travelled to Armenia for the Meaningfulworld Humanitarian Outreach Project (MHOP). On the day devoted to learning disabilities and autism, they provided special education teachers in Armenia with the results of current research on learning disorders with special emphasis on teaching and learning strategies for students with special needs.

**RAYMOND TRYBUS, PhD (dean PSY)**, was featured in the September/October 2010 issue of the *National Psychologist* in "Hearing Loss Always Psychologically Significant." The article stresses that psychologists need to be aware of a common yet almost universally overlooked condition that always has psychological consequences—hearing loss. In the

September 27, 2010, issue of *Time Magazine*, Trybus was quoted in an article about the movement to ordain female priests in the Catholic Church.

**LENI WILDFLOWER, PhD (HOD 1999)**, through a contract with the Institute for Social Innovation (ISI), traveled to Shanghai in September to conduct coach training for Keystone International (Shanghai) Inc., coordinating with Keystone's CEO, **MARJORIE WOO (HOD student)**. Through another ISI international coaching contract, Wildflower traveled to Sao Paulo, Brazil, to work with alumni of the Evidence Based Coaching (EBC) program to help its organization, EcoSocial, work on developing coaching courses to meet standards of the International Coaching Federation. Since most coaching programs don't incorporate theoretical foundations, Fielding is proposing to fill the gap by licensing the 12-week program in schools around the globe to groups such as Keystone and EcoSocial.

In support of Fielding's leading status in coaching education, Wildflower is editing a comprehensive handbook, *What We Do When We Coach—and Why: The Theory and Practice of Evidence Based Coaching* (Jossey-Bass). Many of the contributing authors are Fielding faculty and alumni.



**GLORIA WILLINGHAM, PhD (provost)**, is one of 35 provosts and vice presidents to be selected for the American Council on Education's one-year Chief Academic Officers Institute.

**JUDY WITT, PhD, (dean ELC, HOD 97)**, received the prestigious Glenn Schmitz Award from the North American Council on Staff, Program, & Organizational Development (NCSPOD). NCSPOD, an American Community College Association affiliate, bestows this award each year to an individual who has provided outstanding service to the NCSPOD board. Judy received it for her work to sustain an international community to advance faculty, staff, and organizational effectiveness.

# ALUMNI & STUDENT: *News & Goods*



**MARILYN ARDITO, PhD (HOD 99)**, has been named executive director of human resources at Clarkson University.

**RONNIE BOSEMAN, EdD (ELC 10)**, and **LENNEAL HENDERSON, PhD (ELC faculty)**, presented papers in Auckland, New Zealand, for the "Globalization and Public Policy: An International Cross Cultural Research Exchange" conference. Boseman's paper was entitled "Hawkers: An Ethnographic Study of Strategies for Survival." Henderson was part of a Panel regarding "The Obama Presidency and American Public Policy: Perspectives from Afro-American Scholars."

**DON DELVES, (ELC student)**, was the keynote speaker at the 18th Annual National Association of Stock Plan Professionals Conference, held in Chicago in September. He also led the panel "How to Develop a Highly Effective Relationship with Your Board Com-

pensation Committee." Executive compensation is Delves' dissertation topic area.

**MIRANDA HASKIE, EdD ( ELC 01)**, received the Faculty of the Year award at the May 2010 commencement ceremony at Diné College in Tsaile, AZ, for her scholarship, innovative teaching strategies, and commitment to the students of the college.

**DONNALLYN KALEI (HOD student)** won the 2010 Wo Community Building Award for the University of Hawaii. The award was for building college and community partnerships through pre-construction activity for a new community center.

**JOSETTE LUVMOUR, PhD (HOD 09)**, published a monograph, "Adult Development: Emergent Wisdom in the Family Context," that is based on her dissertation.

**SUSIE MURPH (ELC student)** was named Teacher of the Year for her school, Garrison Elementary, in Savannah, GA, for her commitment to her students and her support of them to reach academic and personal success.

**MONICA ORGANES MURRAY, (PSY student)**, was initiated in November as the president of the Florida Association of School Psychologists. Miami Mayor Tomas Regalado honored her for being the first Latino

President of the Association. She will continue serving as the Latino Co-Chair of the Multicultural Affairs Committee of the National Association of School Psychologists.

**DONNA MURRELL-SPEED, EdD (ELC 06)**, earned the Debate Coach of the Year Award at Long Middle School where she received the Commitment to Excellence Award based on her efforts as a teacher-leader along with that of her fellow teachers.

**DORI PELZ-SHERMAN, PhD (PSY 09)** was the speaker on Autism for Easter Seals of Vermont and for the Integrative Therapy Institute. With Henry Soper, PhD (PSY faculty), she wrote a chapter on Autism Spectrum Disorders in the *Handbook of Forensic Neuropsychology*.

**ANITA PEREZ FERGUSON (HOD student)** and **PLACIDA GALLEGOS, PhD (HOD faculty)**, were interviewed online at *mipstalk.com* about their experiences as featured delegates to the 2010 Center for Hispanic Leadership Summit.

**GARY RANKER, PhD (HOD 83)**, is narrating a series of DVDs covering top thought leaders' ideas on management and leadership. The first DVD is about executive coaching.



*Santa Barbara Mayor Helene Schneider was among the November 4 Channel City Club guests who came to hear Suzanne Baer, PhD (HOD 04), speak about creative longevity and the art of aging. Positive aging requires an ongoing commitment and passion for learning. It turns out that aging well is as much about art as it is about science. Suzanne became a Fielding doctoral student at the age of 62 and found it to be the most ageless profession. Her list for creative aging includes being curious, developing a sense of wonder and a zest for learning, honing qualities of perseverance and endurance, fostering the capacity to become inspired, saying yes to the unexpected, taking advantage of change, taking risks, and focussing on process rather than outcome.*



**ADRIENNE REDD, PhD (HOD 09)**, is the author of *Fallen Walls and Fallen Towers: The Fate of the Nation in a Global World* (Nimble Books), in which she discusses how to make sense of the international catastrophes of the past two decades—including the fall of the Berlin Wall, the events of September 11, 2001, and other body blows to the nation and to political order.

**CATHY ROYAL, PhD (HOD 00)**, had the honor of serving as guest editor for the Spring 2010 issue of *OD Practitioner*.



**TED TAKAMURA's, PhD (HOD 97)**, "Principles of Marketing" class earned a Global Top 50 ranking in May from Glo-Bus for the stock performance of their simulated company.



**CONNIE ULASEWICZ, PhD (HOD 03)**, is this year's faculty recipient of the San Francisco State University's Community Service Learning Award, which recognizes faculty, staff, and students who are involved in community service. Connie, a leader in the sustainable fashion movement and an international consultant on project development and social entrepreneurship, is the associate professor of apparel design and merchandising.

**GRAYSON WALLEES, EdD (ELC 05)**, had a number of video segments broadcast on local TV stations about the Elite Scholars Charter School he established in Clayton County, GA. He is now working for a distressed high school in Atlanta to close the achievement gap and make student success the norm.

**DIANA WATERS, EdD (ELC 05), AUDREY CUFF, EdD (ELC 08), TAMIQUIA SIMON, (ELC student), and CARLA SHERELL (ELC student)** are presenting "Addressing the Institutional Racism which Undergirds the Achievement Gap" in November at the National Associate for Multicultural Education in Las Vegas, NV.

**NATHANIEL J. WILLIAMS, EdD (ELC 08)**, is featured in the July issue of *Success Magazine* in "Fostering Success." The article tells his personal story of overcoming a childhood in foster care and success in establishing Human Works, an organization that helps others in similar circumstances.

## SCHOLARSHIP & PRACTICE

### ACADEMY OF MANAGEMENT

*"Dare to Care: Passion & Compassion in Management Practice & Research" was the theme of the Academy's 2010 annual meeting. Fielding was well represented by a strong delegation of HOD faculty, students, and alumni, including officers of the academy's Division on Organization Change and Development. Dean McClintock hosted a reception for the Fielding group, many of whom were presenters and listed below with the session title.*

**LOUISE KORVER, HOD Student**—Organization and Management Theory/ Managerial and Organizational Cognition Doctoral Consortium—Cognition in the Rough Workshop

**SUSAN SKJEI, HOD student**—Enhancing Compassion through Embodied Awareness—An Approach to Mindful Leadership and Consulting

**GARY WAGENHEIM, PhD (HOD 05)**—"That Was Great!" High Impact Exercises for Teaching or Consulting on Organizational Change

**FRANK BARRETT, PhD, faculty; PAMELA MEYER, PhD (HOD 06); CATE CREEDE, PhD (HOD 08)**—Workplace as Playspace: New Metaphors and Mindsets for Innovating, Learning, and Changing

**ANDRE AVRAMCHUK, HOD student**—Supporting Management Education through the Academy's E-Media and New Collaborative Technologies; and Compassion Research Incubator: Emerging Perspectives on the Scholarship and Practice of Compassion

**JOHN BENNETT, PhD (HOD 06)**—Coaching for Change: Powerful Questions for Organizational Transformation

**SUSAN SKJEI, HOD student**—Can Compassion Be Taught? Spiritual Perspectives and Practices for Leadership Development; and Compassion and Mindfulness: Implications of the Buddhist Worldview for Leadership Development

**ANDRE AVRAMCHUK, student; KATRINA ROGERS, PhD, associate dean; CHARLIE SEASHORE, PhD, faculty; THIERRY PAUCHANT, PhD, faculty; ILENE WASSERMAN, PhD (HOD 04); JUDE OLSON, PhD (HOD 06)**—Leading with Compassion? A Question of Development in Changing Organizations

**MIKE MANNING, PhD, faculty; MARY NASH, PhD (HOD 08)**—The Dynamics of Organizational Change

(Continued page 22)

# SCHOLARSHIP & PRACTICE

## ACADEMY OF MANAGEMENT (CONTINUED)

**NANCY C. WALLIS, PhD, associate dean, (HOD 99)**—Transformational Leadership and Change; and Social Interaction and Sensemaking

**MARGARET RUDOLF, PhD (HOD 09)**—Trust, Fairness, and Effective Change

**LINDA KLONSKY, PhD (HOD 10)**—Contagious Passion and Compassionate Truth-telling

**CHARLES MCCLINTOCK, PhD, dean**—Creativity, Decision-making & Learning

**FRANK BARRETT, PhD, faculty, and PAMELA MEYER, PhD (HOD 06)**—Unplanned Behavior in Entrepreneurship/Organizational Behavior: Bricolage Effectuation Improvisation

**PAMELA MEYER, PhD (HOD 06)**—From Workplace to Playspace: Innovating, Learning and Changing through Dynamic Engagement

**ROSEMARY MAELLARO, PhD (HOD 08)**—Exploring Managerial Effectiveness through Interpersonal Skills; and Hard Facts on Soft Skills: What We Know and Want to Know about Managerial Interpersonal Skills

**FRANK BARRETT, PhD, faculty**—Institutions and Interventions: Exploring the Discourse of Planned Change and Institutional Change

## ORGANIZATION DEVELOPMENT NETWORK

*Dean McClintock hosted a reception for a large delegation of HOD faculty, students, and alumni at ODNet's annual conference in New Orleans. Their presence at ODNet, like that at the Academy of Management, helps maintain HOD's position as a leader in the field of organizational change and development. Many of them were presenters and are listed below with the session title.*

**SHIRLEY MAYTON, HOD doctoral student**, is to be congratulated for receiving a student best paper award for "A Fresh Look at Resiliency in the Wake of Downsizing."

**JEFF FRAKES, PhD, and RUTH HOUSE, PhD, OMD faculty**—Showing Our Value: How Do We Demonstrate the Impact of Our Work?

**CHARLIE SEASHORE, PhD, HOD faculty**—Past, Present and Future of OD

**CHARLIE SEASHORE, PhD, HOD faculty; CATHY ROYAL, PhD, (HOD 00)**—Kurt Lewin Master Class series presenters

**BARBARA MINK, PhD, HOD faculty**—Having 2020 Vision: Community College Change Initiatives

**CATHY ROYAL, PhD (HOD 00)**—OD and Social Justice: A Dialogue

**CATHY ROYAL, PhD (HOD 00); CAROL PARKER WALSH, PhD (HOD 05), associate dean; MARCELLA BENSON-QUAZIENA, PhD (HOD 96) OMD faculty**—Emotion Work for OD Practitioners of Color and the Making of an OD Journal

**JOHN HOOVER, PhD (HOD 06)**—High Impact Coaching for Organizational Change

## AMERICAN EDUCATIONAL RESEARCH ASSOCIATION (AERA)

*The School of Educational Leadership & Change raised its impact and presence this year at the AERA Annual Meeting in Denver, CO. Jenny Edwards, PhD, (HOD 93 and ELC faculty), Laura Mitchell, EdD (ELC 09), Kay Phelps (ELC student), and Susan Stillman, EdD (ELC 07 and ELC faculty) all hold key leadership roles with AERA Special Interest Groups.*

*The following individuals made presentations or served as session chairs and discussants:*

**ANNA DISTEFANO, EdD (ELC faculty) and JENNY EDWARDS** presented "Creating Invitational Learning Environments in a Wide Variety of Diverse Contexts."

**VICTORIA EIBEN, EdD (ELC 08)**, presented "Key Elements in the Success and Sustainability of Visionary Grassroots Education Initiatives" and "Shaking Down the Learning Experts in an Uncertain Future: Demystifying Professionals and Recovering Common Sense."

**SHAWN GINWRIGHT, PhD (ELC faculty)**, served as discussant for "Community Organizing as Sites of Critical Learning and Teaching for the Critical Educators for Social Justice" and "Youth Rising: Activism, Hope, and Healing in Urban Education for the Division K—Teaching and Teacher Education/Section 8 program, Hope and Healing in Urban Education."

**SUE GORDON, PhD, (ELC faculty)**, chaired "Developing Effective Mentoring Practices across Schools and Universities."

**JEREMY KEMP, (ELC student)**, presented "Educational Research in the Virtual World."

**INDRA MAHABIR, EdD (ELC 02)** presented "Exploring Educational Material Needs and Resources for Children Living in Poverty."

**KAY PHELPS (ELC student)** presented "Building Learning Communities That Foster Partnerships with Navajo and Ute Mountain Ute Families."

**SUSAN STILLMAN, EdD (ELC 07 and ELC adjunct faculty)** chaired "Educator Development" and presented "Working the System: School Counselors Aligning to Advantage."

# CONGRATULATIONS NEW GRADUATES!

## SCHOOL OF EDUCATIONAL LEADERSHIP & CHANGE

**Suzanne B. Antink, EdD**, "Geometry Success, Brain Theory, and Community Building"

---

**Marilyn Bailey, EdD**, "Shouldering: A Grounded Theory of Helping Relationships"

---

**Eugenio Barrios, EdD**, "'Ganas' of Showing the Way: A Grounded Theory Study of Hispanic Presidents in Higher Education"

---

**John G. Burlison, EdD**, "Graduate Student Services: A Study of the Delivery of Services at Locations Other Than Where Students Matriculate"

---

**Maria H. Collins, EdD**, "Help-Seeking Behavior among Mexican Immigrant and Mexican Female Victims of Intimate Partner Violence and the Relationship of Acculturation to Incidence of Domestic Violence in Memphis, Tennessee"

---

**Kathleen Cummings, EdD**, "Coming to Grips with Loss: A Grounded Theory Study"

---

**Alison A. Denton, EdD**, "The Impact of Gentrification on K-12 Student Racial Diversity: Perceptions, Metrics, and Advocacy"

---

**Michael G. Freeman-McGuire, EdD**, "An Investigation into the Barriers to Treatment and Factors Leading to Treatment and Long-Term Recovery from Substance Abuse among Registered Nurses"

---

**Glen V. Gatin, EdD**, "Keeping Your Distance: A Basic Social Process"

---

**Abdulaziz A. Ghailan, EdD**, "An Action Research Study to Examine the Impact of a Social Understanding Program on Muslim Students"

---

**Lisa G. Goldberg, EdD**, "Moving On: A Grounded Theory of Voluntary Change"

---

**Janet H. Hironaka, EdD**, "Creating a Conference and Workshop Attendance Process with Teacher Collaboration"

---

**Teresa Y. Horne, EdD**, "The Relationship between Stress, Academic Confidence, Parental Involvement, and Academic Achievement in African American Urban Youth"

---



*Summer 2010 Educational Leadership & Change graduation celebrants*

---

**Leah R. Johnson, EdD**, "The Role of African American Parents in Creating Academic Success for Their Children"

---

**Bruce E. Kern, EdD**, "Navigating: A Grounded Theory Study on How School Administrators Prepare to Make a Difference"

---

**Juanita Q. Laurie, EdD**, "An Investigation of the Inclusion Model of Instruction with Assistive Technology and the Regular Education with Pull-Out Model of Instruction"

---

**Rodney A. Libert, EdD**, "Breaking Out of the Box: A Grounded Theory Study of Urban High School Students"

---

**Pamela T. Luster, EdD**, "Discovering Effective Student Equity Practices in California Community Colleges: An Action Research Study"

---

**Mark C. Meachem, EdD**, "Helping You to Help Me: The Effective Pursuit of Self-Interests in 'World of Warcraft' and Its Correlation to Offline Social Capital"

---

**Rob R. Mieso, EdD**, "Connecting the Dots—From Planning to Implementation: Translating Commitments into Action in a Strategic Planning Process"

---

**Christopher J. Molnar, EdD**, "Democratic Postsecondary Vocational Education"

---

**Barbara B. Randolph, EdD**, "Reculturing: Changing the Culture of Practice"

---

**Bruce Roach, EdD**, "Educational Technology in the Classroom from the Teacher's Perspective"

---

---

**Andr e G. Robinson-Neal, EdD**, "Using Social Network Analysis to Examine How Perceived Beliefs Affect Service Quality in Public Higher Education Institutions"

---

**Kara L. Rosenberg, EdD**, "Regaining a Foothold: A Grounded Theory Study of Immigrant Experiences"

---

**Donna J. Satterlee, EdD**, "Exploring Changes and Perceptions in Environmental Attitudes as a Result of Early Learning Experiences in the Outdoor World Utilizing SPARK, an Innovative Family Learning Program"

---

**Lynnette M. Simm, EdD**, "Assessing Educators' Professional Development Needs in Single-Sex Classrooms"

---

**Deloris Smith, EdD**, "Early Childhood Readiness: The Status of Early Childhood Programs in One of Jamaica's Educational Regions"

---

**Linda M. Spriggs, EdD**, "The Historical Black College and University Experience: A Qualitative Study"

---

**Denise M. Stitt, EdD**, "Special Education Support to General Education Teachers in U.S. Accredited Schools Abroad"

---

**Shifra Teitelbaum, EdD**, "If Everyone Kept Quiet, There Would Never Be Any Justice: Listening to Latina and Latino Youth Voices"

---

**Kevin H. Yim, EdD**, "Blueprinting: A Grounded Theory of Conceiving, Developing, and Implementing Organizational Change"

---

*(Continued page 24)*

# GRADUATES

## SCHOOL OF HUMAN & ORGANIZATIONAL DEVELOPMENT

---

**Carol L. Aslan, PhD**, "A Comparison of the MMPI-2 Scale 4 and Restructured Clinical (RC) Scale 4 Using an Incarcerated Sample"

---

**Muriel A. Berg, PhD**, "What Are the Lived Experiences of Women Over 50 Who Report a Dramatic Shift from a Negative to Positive Self-Image?"

---

**Sheri K. Bias, PhD**, "The Contact Zone of Temporary Minorities: White Faculty at a Historically Black University"

---

**James T. Bogner, PhD**, "Health Care Providers and Their Clients with Type 2 Diabetes"

---

**Randall T. Byrnes, PhD**, "Transition at the Top: CEOs' Sense of Self When Separating from Their Company"

---

**George William Siteri Fedha, PhD**, "How Aid Workers Adapt to Complexity and Uncertainty in the Frontline of War against Hunger"

---

**Wendy Lara Fraser, PhD**, "Trust, Violation, and Repair: An Exploration of the Views of Work Group Members"

---

**Joan Renee Goppelt, PhD**, "Feedback Conceptualization in Organizations: A Study of Civil Servants in a Navy Research and Development Lab"

---

---

**Margaret A. Grant, PhD**, "A Theory of Women Engaged in Liberation Theological Praxis"

---

**Stephanie D. Guthman, PhD**, "Student Perceptions of School Climate in a Bermuda Middle School: A Program Evaluation Study"

---

**Rosaria Hawkins, PhD**, "Capturing the Emergent Future: A Grounded Theory Study to Explore the Processes by Which Mindful Leaders Engage Others in Organizational Change."

---

**Phyllis Ann Heintz, PhD**, "Identities at the Intersections: Lesbian Executives' Experiences with the Management of the Disclosure of Their Sexual Identity in the Workplace"

---

**Kimberlee M. Herr, PhD**, "Learning to Live in the New Normal: The Experiences of Individuals Who Ascend Hope in Their Caregiving Role"

---

**Shirra J. Kenworthy, PhD**, "Decision Making in Figure Skating: A Study of Cognitive Processing by Judges"

---

**Joyce A. Langenegger, PhD**, "In the Midst of Their Journeys: Professors' Reports of Transitions in Teaching"

---

**Franklin D. Lawrence, PhD**, "Micro-Authority Transactions in Family Conversations: How Parents and College-Directed Adolescents Use Language to Claim, Assign, or Reject Personal Authority and Autonomy"

---

---

**Marie Legault, PhD**, "Becoming an Ethical Leader: An Exploratory Study of the Developmental Process"

---

**Andrew Frazier Meade, PhD**, "Intercultural Competence: An Appreciative Inquiry"

---

**Kathleen M. Meehan, PhD**, "Exploring the Qualities That Support Student Success: A Case Study of the Extended Opportunities Programs and Services (EOPS) at Santa Barbara City College"

---

**Georgia Pappas, PhD**, "The Integral Leadership of Dr. Jane Goodall"

---

**Rick T. Press, PhD**, "Employees' Subjective Experience in Participating in a Performance Management System Based on the Principles of Appreciative Inquiry"

---

**Marilyn Price-Mitchell, PhD**, "Civic Learning at the Edge: Transformative Stories of Highly Engaged Youth"

---

**Wanda Ellen Raboin, PhD**, "The Social Construction of Collaborative Practice in a Hospital Unit"

---

**Keith Wilson Ray, PhD**, "Culture Talk: Cultural Referencing by Work-Related Dyads"

---

**William R. Reinhardt, PhD**, "Specious Rights: Myth vs. Reality in the American Criminal Justice System"

---

**Kathryn L. Sahadath, PhD**, "Leading Change One Conversation at a Time: A Phenomenographic Study of Senior Leadership Conversations"

---

**Kimberly E. Samaha, PhD**, "The Diffusion of Influence in the Online Social Network of Facebook"

---

**Maki I. Tsumagari, PhD**, "The Enduring Effects of a United World College (UWC) Education as Seen through a Graduate's Eyes"

---

**Barbara J. Volger, PhD**, "The Power of Shame in Jewish Women: A Phenomenological Exploration of Cultural Messages"

---



*Summer 2010 Human & Organizational Development graduation celebrants*

## SCHOOL OF PSYCHOLOGY

---

**Susan P. Barron, PhD**, "Fitness for Duty Evaluations: An Exploratory Study of Psychologists' Decision-Making and an Examination of Gender Bias in Fitness for Duty Decisions"

---

**Kristin L. Beasley-Sullivan, PhD**, "How Duration of Relationship with a Care Provider and Creating Connected Care with Parents Impacts Resilience in Infants and Toddlers"

---

**Katherine K. Bellon, PhD**, "Individualism-Collectivism, Ethnicity, and Therapy Preference"

---

**Issis M. Betts-Jimenez, PhD**, "Anger in Anxious, Depressed, and Comorbidly Depressed and Anxious Pregnant Women"

---

**George Allen Cave, PhD**, "Maternal and Paternal Differential Attachment Associations and Inpatient Adolescent Psychological Well-Being"

---

**Neslihan G. Chandler, PhD**, "Parenting Style as a Moderator for Parent-Child Food Preoccupation"

---

**Nancy A. Cheever, PhD**, "The Cultivation of Social Identity in Single Women: The Role of Single Female Characterizations and Romantic Relationship Portrayals on Television"

---

**Louise E. de la Haye, PhD**, "Relationship of Engagement and Outcome in a Cognitive-Behavioral Initiative for Depression Prevention with Adolescent Girls"

---

**Teresa R. Diaz, PhD**, "Self-Schemas, Goal Orientations, Mindfulness, and Sport Confidence in Equestrian Athletes"

---

**P. Dian Evans, PhD**, "MMPI to MMPI-2 to MMPI-2-RF: An Examination of the Psychometric Properties in a Sample of Patients with Medically Unexplained Physical Symptoms: Somatization Is Suspected"

---

**Kelsey A. Fassieux, PhD**, "Risk Factors for Suicide Ideation in a Community Mental Health Sample of Pre-pubertal Children"

---

**Seda Gragossian, PhD**, "Birth Order and Personality: An MMPI-A Study of Adolescents from Three Spanish-Speaking Countries"

---



---

**John M. Hart, PhD**, "Relationship between Patient Anger, Experiential Avoidance, Initial Levels of Obsessive-Compulsive and Depressive Symptoms, and Response to Intensive Inpatient Cognitive-Behavioral Treatment"

---

**Heather A. Heinrich, PhD**, "The Relationship of Religion to Beliefs about Physical Punishment and Physical Abuse"

---

**Jerri Lynn C. Hogg, PhD**, "Impact of Personality on Communication: An MMPI-2 Study of African American College Students and their Choice in the Digital Communications Age"

---

**Mark I. Holbrook, PhD**, "Police Officers: The Relationship of Stoicism to Symptoms of PTSD"

---

**Sureyya Iscan, PhD**, "The Relationship between Levels of Ego Development and Stressful Life Events in Borderline Personality Disorder"

---

**Nancy Edwards Johnson, PhD**, "Attachment Patterns of Incarcerated Women"

---

**Lisa V. Kandra, PhD**, "Prenatal, Pregnancy, and Perinatal Factors that Are Potential Contributors to the Onset of Autism"

---

**Lorrie Norimi Kato, PhD**, "The Psychological Adjustment of Veterans Returning from Afghanistan and Iraq"

---

**Shane A. Kelley, PhD**, "Effects of Structured Writing on a Population of Substance-Dependent Individuals: An Assessment of Relapse Rates and Affective Dysregulation"

---

**Cheri N. Koinis, PhD**, "Self-Esteem Level, Self-Esteem Stability, and Procrastination: Predictors of Academic Achievement in First-Year Medical Students"

---

---

**Thomas M. Letvinchuck, PhD**, "Attachment, Empathy, and the Therapeutic Alliance among Psychotherapists: Interrelationship and the Mediating Role of Empathy"

---

**Maria R. Marshall, PhD**, "When Loss Brings Gain: The Influence of Person and Event Characteristics on Posttraumatic Growth in the Bereaved"

---

**Christopher L. Mathe, PhD**, "Changes in Perceptions of Masculinity among Men Who Have Sought Help: A Grounded Theory Study"

---

**Karen L. McGraa, PhD**, "The Effects of Persuasive Motivational Text Messaging on Adherence to Diet and Exercise Programs among Different Personality Traits"

---

**Michael Glenn Meyer, PhD**, "Human Development and the Use of Health Education Media among Adult Type 2 Diabetics in Rural Appalachia"

---

**Susan F. Mickel, PhD**, "Attachment Style in Spouse Caregivers of Patients with Alzheimer's as It Affects the Experience of Caregiving and the Behavior of the Patient"

---

**Virginia M. Newton, PhD**, "Using the Principle of Rationality-within-Irrationality to Assess Inpatient Violence Risk at the Time of Admission"

---

**Theresa M. Normoyle, PhD**, "Becoming a Clinical Psychologist: Midlife Women's Narratives of Professional Identity Development"

---

**Christine T. Pearson, PhD**, "Predictors of Sexist Attitudes in a Mexican American Adult Sample: A Test of Glick and Fiske's Ambivalent Sexism Theory"

---

(Continued page 26)

## GRADUATES

### SCHOOL OF PSYCHOLOGY (CONT.)

---

**Aparna Rao, PhD**, "Contextual Self-Esteem Variability during Preadolescence: Relation to Mental Flexibility, Emotional Dysregulation, and Depressive Symptoms in a Low-Income, Urban Environment"

---

**Kelly L. Russo, PhD**, "Multicultural Competence in European American Therapists: Role of Cultural Privilege Awareness in the Therapeutic Alliance"

---

**Carolyn Beth Sasano, PhD**, "Executive Functioning as Ecological Assessment of Medication Management: Clinical and Normative Utility of the Pill Box Test"

---

**Cris A. Scaglione, PhD**, "PET Scan and Wisconsin Card Sorting Test in Traumatic Brain Injury"

---

**Loreli A. Thompson, PhD**, "Predictors of Internalizing and Externalizing, and Severity of Sexual Harming in Adolescent Girls with Sexually Harming Behavior from a Community Sample of Sexually Offending Behavior"

---

**Tim L. Vander Molen, PhD**, "Preoperational Thinking: Is It an Essential Structural Characteristic of Early-Onset Chronic Depression?"

---

**Shamsi Varshochi Eaton, PhD**, "Religious Service Attendance, Mothers' Education Levels, and Personality Characteristics of African American Women: An MMPI-2 Study"

---

**William Durwood Whitten, PhD**, "Potential of Multiple Test Biases against Hispanics in the MMPI-2: A Study of Mexico and Venezuela"

---

**Yoshiko Yamamoto, PhD**, "Biculturalization and Psychological Well-Being among Japanese Americans"

---

**Richard D. Yao, PhD**, "A Grounded Theory of Enduring Motivation in Mental Health Professionals Who Work with Transition-Age Youth with Severe Emotional Disturbance"

---

**Gregory F. Zerovnik, PhD**, "Engaging Media Content and Fluid Intelligence: Is There a Correlation?"

---

## MASTER'S PROGRAMS

### MA, ORGANIZATIONAL MANAGEMENT & DEVELOPMENT (School of HOD)

---

Kathryn B. Adams  
Joyce Ajlouny  
Elijah E. Ali  
Lara J. Anderson  
Tracey Anderson  
Susan M. Babcock  
Diahana L. Barnes  
Joseph A. Blaeuer  
Donna J. Carney  
Mark H. Chandler  
Marilyn J. Clerc  
Anita L. Dahlstrom  
Nadine M. Dillabaugh  
Joseph P. Foran  
Violetta C. Hatipoglu  
Meredith Havrilla  
Michael J. Herzog  
Jill N. Johnston  
Daisy A. Kelly  
Kimberly A. Kratz  
Sundari Kumar  
Kanelli Marsh  
Alissa H. Marshall  
Susan K. McCandless  
Miriam L. Meima  
Jenny Newcomb  
Ivette Pagan  
Kathleen Paterson  
Prema J. Patri  
Sonja R. Pemberton  
Dulce L. Pena  
Patrice L. Pettis  
Marcia B. Rhode  
Nancy J. Richard  
Mary K. Ryan  
David A. Sedlacek  
Karen M. Settlemyer  
Maren S. Showkeir  
Albert L. da Costa Sochin  
Deidra A. Scott  
Kathryn J. Taft  
Leslie R. Taylor  
Jude Thompson  
Stephen D. Upham  
Gregory S. Woo  
Jorge L. Zeballos

### MA, MEDIA PSYCHOLOGY & SOCIAL CHANGE (School of Psychology)

---

Carla Casilli  
Theodore R. Contreras  
Donna L. Ewbank  
Alexandra A. Hillman  
Christina I. Hoover  
Daniel C. Mollison  
Nicole N. Wallace

### MA, COLLABORATIVE EDUCATIONAL LEADERSHIP (School of ELC)

---

Angela J. Albright  
Kathryn A. Baker  
Kimberly Bazan  
Vanessa R. Cruz Beltran  
Willis Blake  
Erin E. Blakley  
Beau B. Brezenski  
Jane E. Briehl  
Kara B. Bunderson  
Shannon N. Burns-Casimier  
Mark R. Bussian  
Jaclyn K. Bystol  
Sarah E. Carlock  
Ruth M. Carrasquillo  
Kasey L. Coopridger  
Tracy M. Crawford  
Sheri L. Crenshaw  
Diana L. Cronquist  
Virginia G. Delgado  
Susan E. Edwards  
Rebecca K. Ensley  
Antoinette R. Ellis  
Erica G. Fessler  
Julia J. Garczynski  
Matilde A. Garrido  
Jamie L. Garven  
Douglas H. Gollither  
Daniella E. Gomez  
Emeline A. Good  
Suzanne S. Gunderson  
Charlotte M. Hayes  
Sonia Henderson  
Carolina M. Hernandez  
Jean Hilby  
William J. Hinkle  
Amy L. Hooper  
Kerry J. Horn  
Lisa R. Humke  
Diana L. Janecek  
Erin E. Jirschele  
Angela R. Johnson  
Karen S. Klemp  
Monica Y. Kmak  
Leslie A. Lakin  
Joy C. Leineweber  
Anneke M. Legge  
Arleen Chavez-Linares  
Shayla T. Loadholt  
Carol A. Lord  
Maria G. Martinez, II  
Lena A. Mayfield  
Carinne A. McGowan  
Christine T. Miller  
Phyllis M. Nichols  
Eric K. Olson  
Shannon J. Parman  
Jennifer C. Petraglia

Olivia D. Ray  
Shennel C. Reedy  
Jennifer A. Ring  
Kathia M. Romo  
Claudia E. Sanchez  
Laura L. Serrato  
Brian G. Smith  
Derrick L. Snead  
Jacquelyn Sumpter  
Jennifer J. Thomas  
Mary B. Townsend  
Ashley M. Tranchita  
Anjanette Urdanivia  
Tracy L. Widiker  
Staci L. Williams

## CERTIFICATE PROGRAMS

### CERTIFICATE, TEACHING IN THE VIRTUAL CLASSROOM (School of ELC)

---

Melody D. Allen  
Megan A. Brooks  
Linda G. Buckley  
Rosalina Burgos  
Timothy A. Dahlin  
Mary K. Dawes  
Catherine Gorvine  
Hope T. Hanks  
Tanya V. Hendsbee  
Margaret A. Hunter  
Krista A. Lawrence  
Edward G. McLachlan  
Thomas M. McQuaid  
John M. Muehl  
Karen H. Muhsin  
Amanda Rosenzweig  
Steve M. Szymoniak  
Steve D. Trichell  
Jessica L. Ward

### CERTIFICATE, RESPECIALIZATION IN CLINICAL PSYCHOLOGY (School of Psychology)

---

Gillian B. Karp  
Deborah M. Lawrence

### CERTIFICATE, ORGANIZATIONAL MANAGEMENT & DEVELOPMENT (School of HOD)

---

Ali Alavi  
Mark A. Alexander  
Kelly W. Colopy  
Jonathan C. Elder  
Elva D. Castaneda de Hall  
Christine I. Kontos  
William F. Ritke-Jones

### CERTIFICATE, NEUROPSYCHOLOGY (School of Psychology)

---

Hope B. Bagley  
Anyia L. Barak  
Lucille M. Esralew  
Robert T. Ferguson  
Gregory E. Goffinet  
Ari B. Graff  
Valerie King  
Nicholas A. Lind  
Deveda L. Mah  
Lori D. Milan  
Steven C. Schneider  
Ben J. Susswein  
Margaret S. Walker

### CERTIFICATE, INTEGRAL STUDIES (School of HOD)

---

Terry S. Baker  
Angela J. Eagan  
Carlos A. Gonzalez  
Richard K. Trebus  
Scott C. Washburn

### CERTIFICATE, EVIDENCE BASED COACHING (School of HOD)

---

Cezanne C. Allen  
Lisa A. Applegate  
Cheryl A. Arrowood  
Suzanne M. Begin  
Cathy Jane Bowes  
Ronald D. Brown  
Valarie A. Brown  
Michele Campbell  
Tina Canerday  
Vanessa Corey  
Cynthia M. Crawford  
Linda K. Davis  
Laura A. DeHaven  
Sally A. DeWitt  
Anna Drosztmer  
Jane M. Drury  
Jeannie Duncan  
Deborah C. Early  
Charlyn Green Fareed

Thomas M. Flanagan  
Joseph P. Foran  
William Frei  
Raheisha M. Gist  
Jason C. Gleaton  
Debra S. Graham  
Tiina M. Harmaja  
James G. Harris  
Christine H. Huerta  
Jonathan D. Jackson  
Dilys J. Jones  
Flavio Kosminsky  
Carmen D. Kuchera  
David H. Lowe  
Meredith B. Lubitz  
Rebecca J. Macomber  
Tami W. Marquardt  
Barrett W. McBride  
Valerie T. McCabe  
Michael J. Milbier  
Kimberlynn H. Morris  
Christopher G. Nichols  
Deirdre L. O'Neill  
Maryellen C. O'Neill  
Beverley Paulin  
Gail W. Perry  
Maria Lucia C. Pettinelli  
Leah A. Poe  
Kristopher Potrafka  
Alisha M. Randall  
Anne B. Reeve  
Steven G. Roberts  
Laurie T. Rosenfeld  
Marilyn M. Ross  
Mary K. Ryan  
Thomas J. Schnugg  
Tammy J. Seibert  
Sonya M. Shelton  
Patrick J. Smith  
Sharon L. Spano  
Jude Thompson  
Debby E. Throckmorton  
Nazir A. Umrani  
Elizabeth D. Ward  
Thomas P. Werner



● **KENYA 2010** ●

The **Worldwide Network for Gender Empowerment (WNGE)** provides an international virtual network of scholars and activists committed to research and action in support of women's and gender issues. In September 2010, WNGE members traveled to Kenya to promote preventive health education in a village on Lake Victoria. WNGE members Andrea Zielke-Nadkarni of Germany, Patricia Hinchberger of the US, and Ani Kalayjian of the US joined Joyce Oneko of Kenya and the social welfare organization **Mama na Dada** to discuss topics including teeth brushing, clean water, and how to earn a living.

