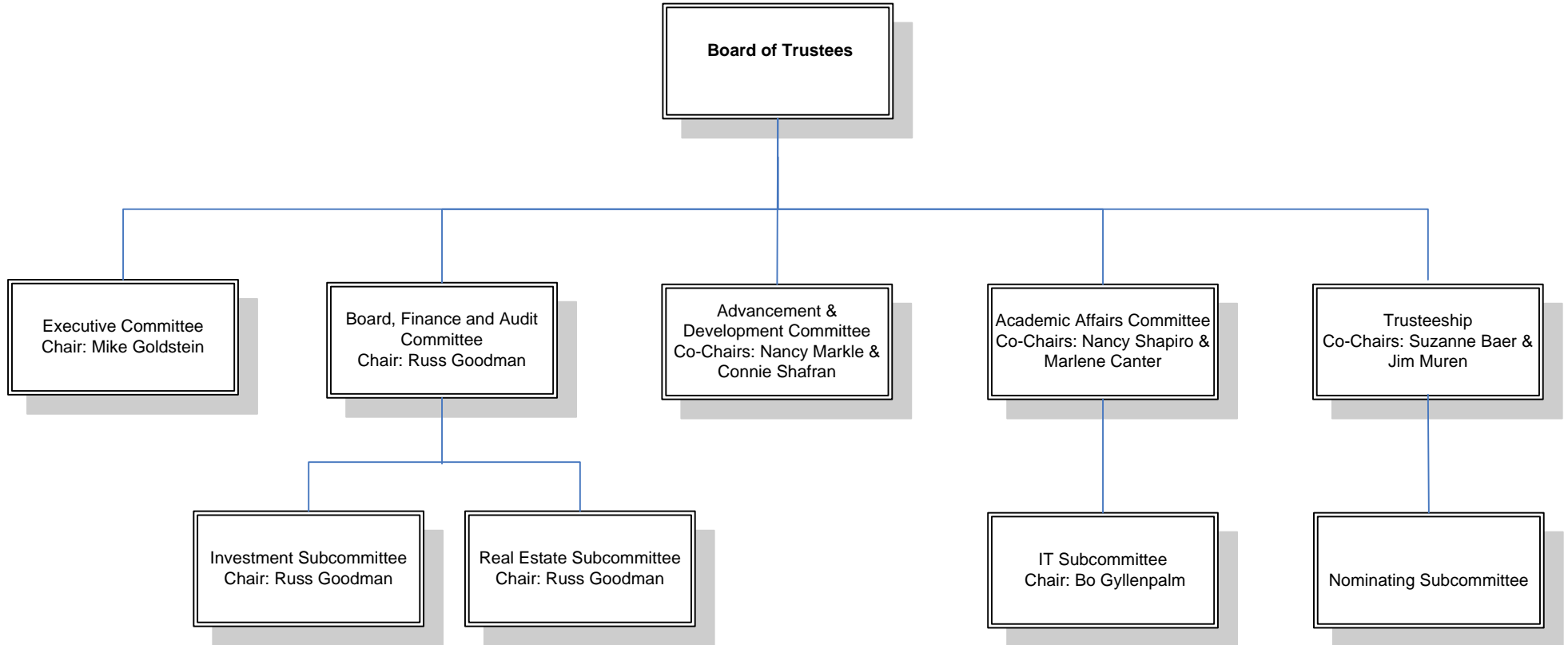
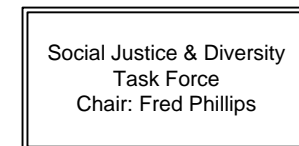


Board of Trustees



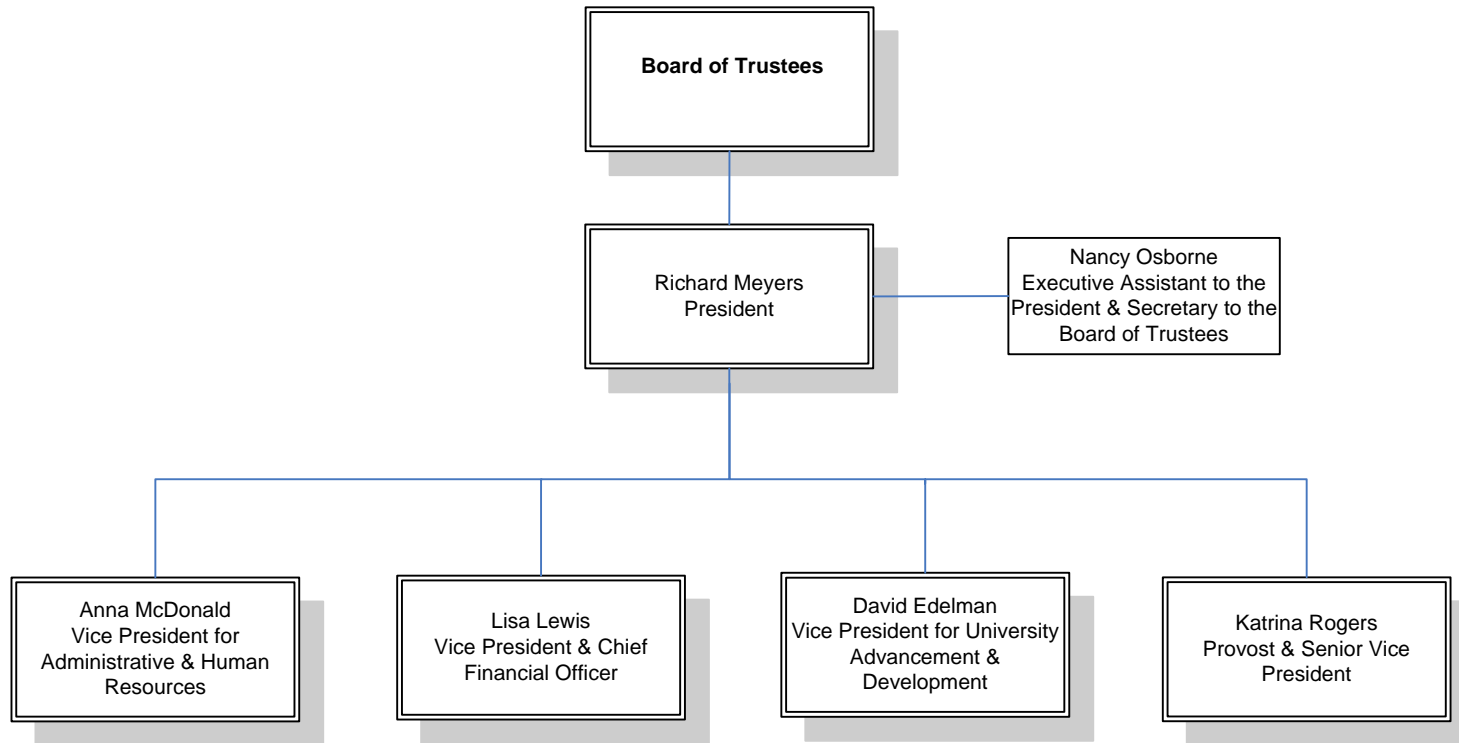
Ad-hoc Committees/Task Forces



Key

Manager/Supervisor: =====
 Consultant/Temp: - . - . - . -
 Vacancy:

University Leadership Team



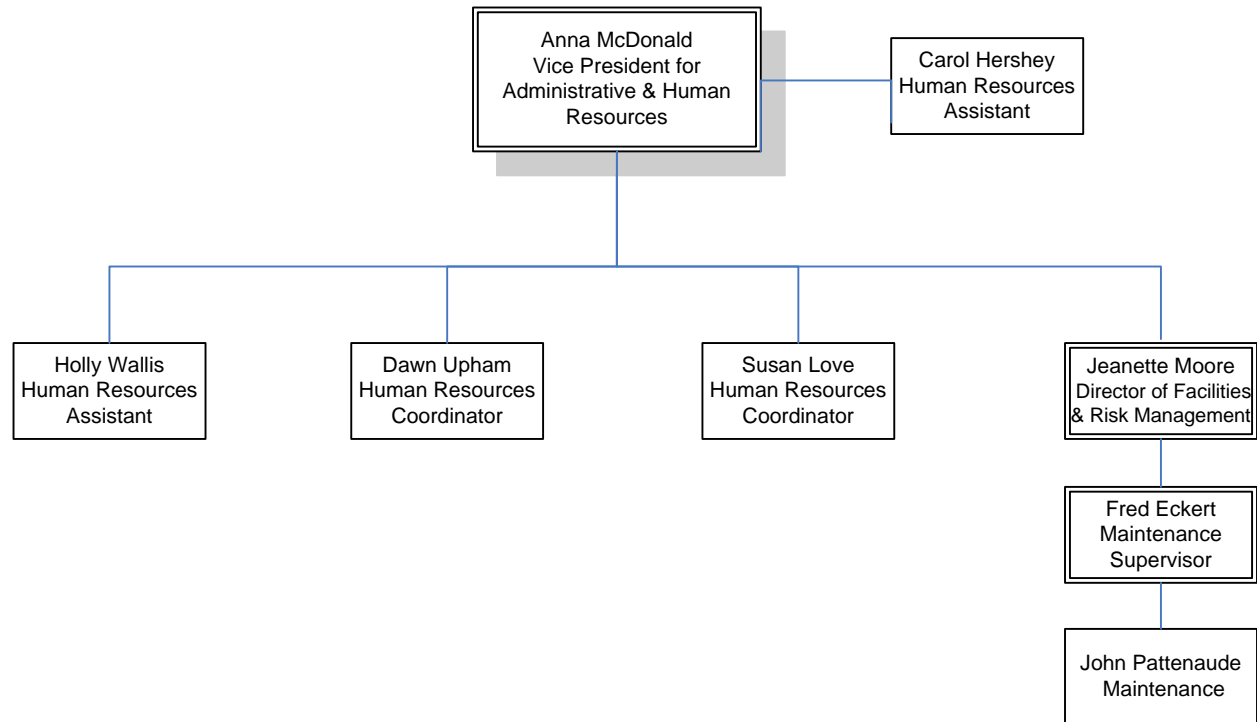
Key

Manager/Supervisor: =====

Consultant/Temp: - . - . - . -

Vacancy:

Administration & Human Resources



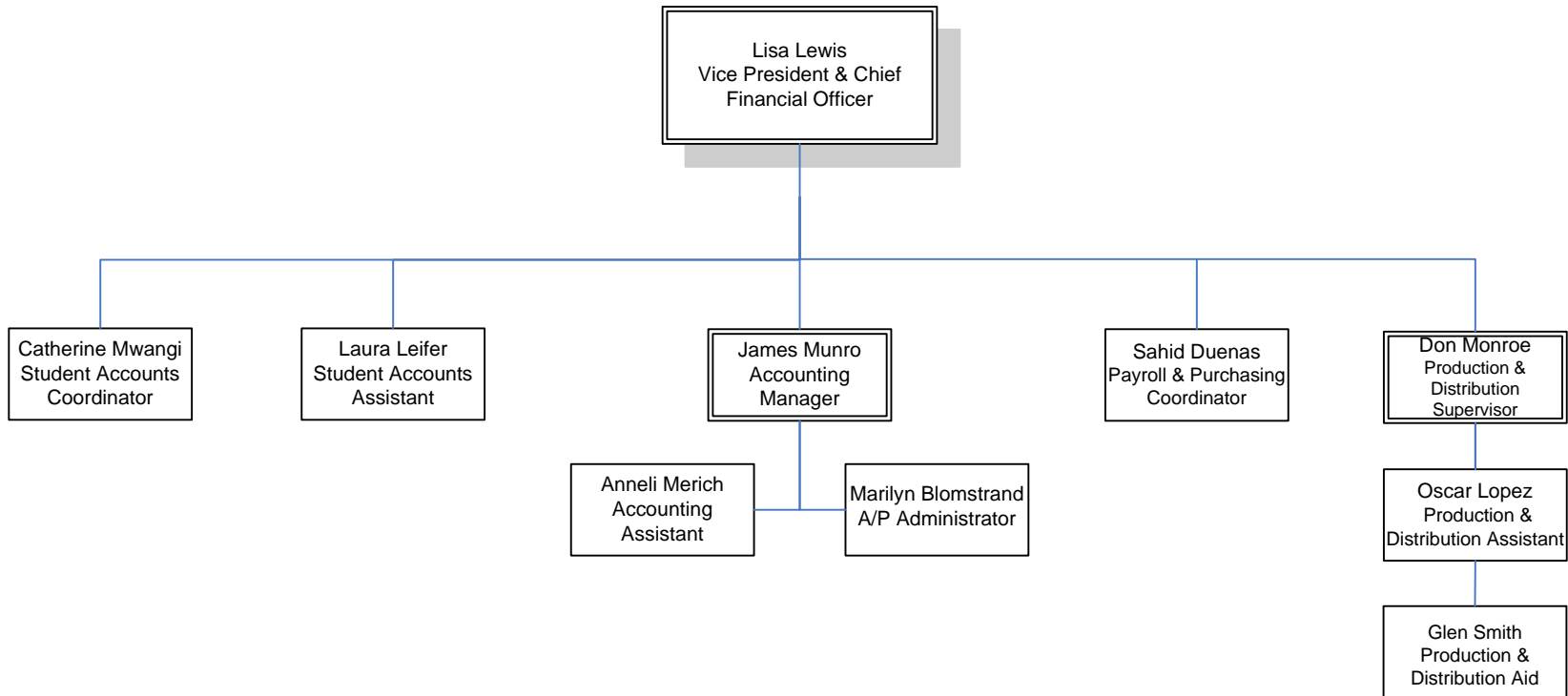
Key

Manager/Supervisor: =====

Consultant/Temp: - . - . - . -

Vacancy:

Finance



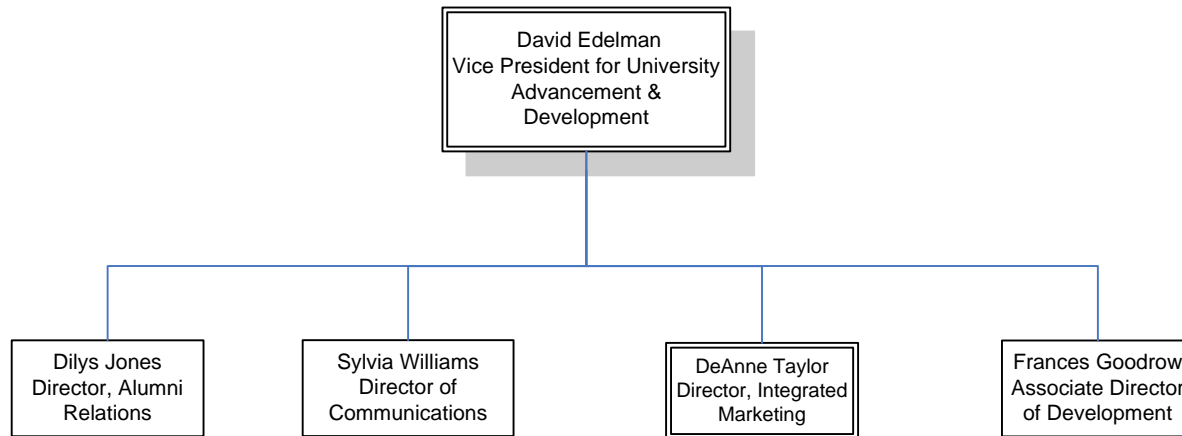
Key

Manager/Supervisor: =====

Consultant/Temp: - . - . - . -

Vacancy:

Advancement and Development



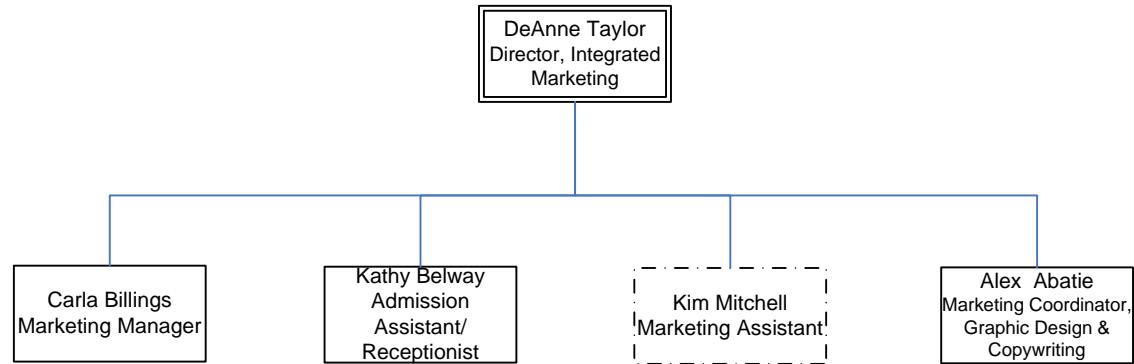
Key

Manager/Supervisor: =====

Consultant/Temp: - . - . - . -

Vacancy:

Integrated Marketing



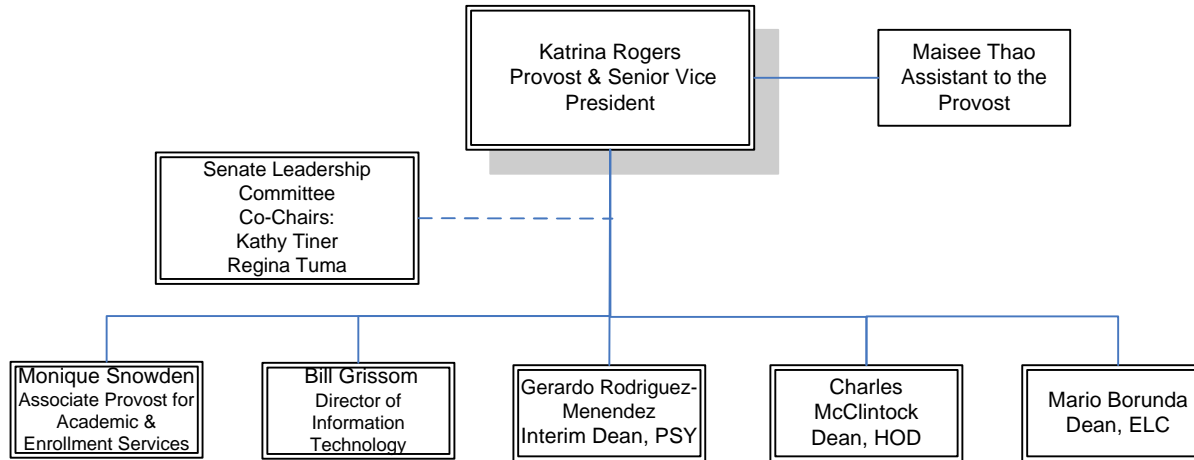
Key

Manager/Supervisor: =====

Consultant/Temp: - . - . - . -

Vacancy:

Academic Leadership Team



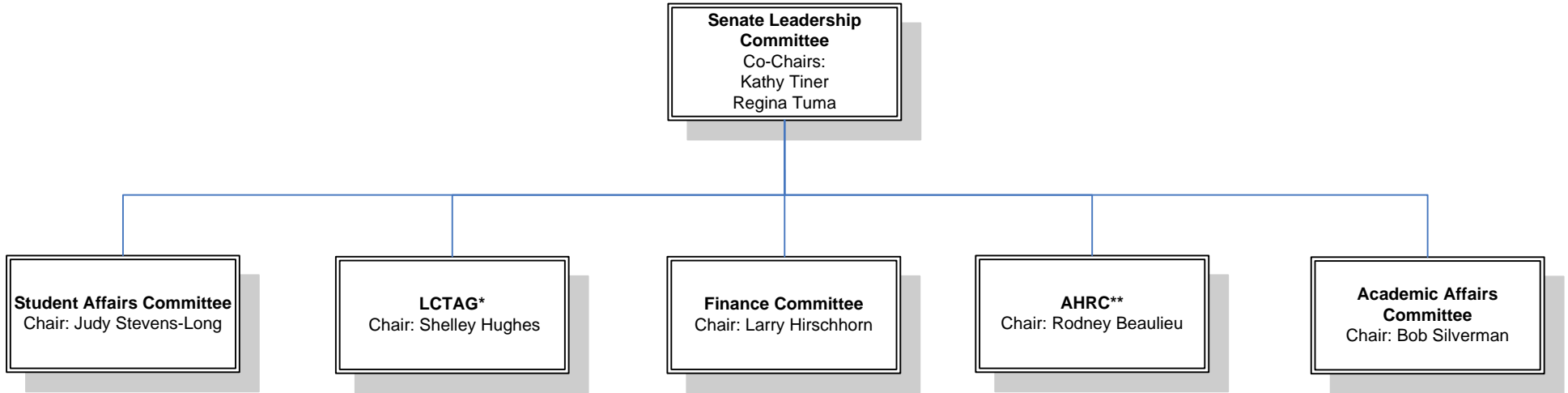
Key

Manager/Supervisor: =====

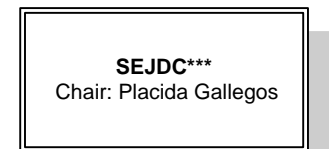
Consultant/Temp: - . - . - . -

Vacancy:

Academic Senate



Ad-hoc Committees/Task Forces

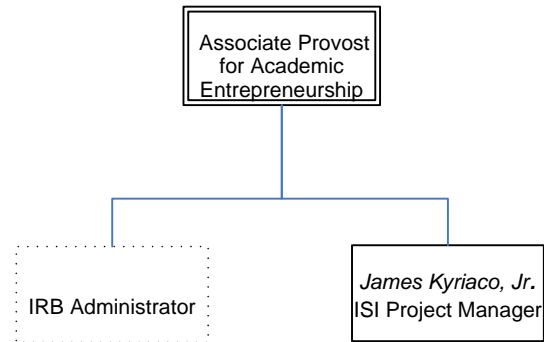


Key

Manager/Supervisor: =====
 Consultant/Temp: - . - . - . -
 Vacancy:

* Learning, Community & Technology Advisory Group
 ** Academic Human Resources Committee
 *** Social/Ecological Justice & Diversity Commission

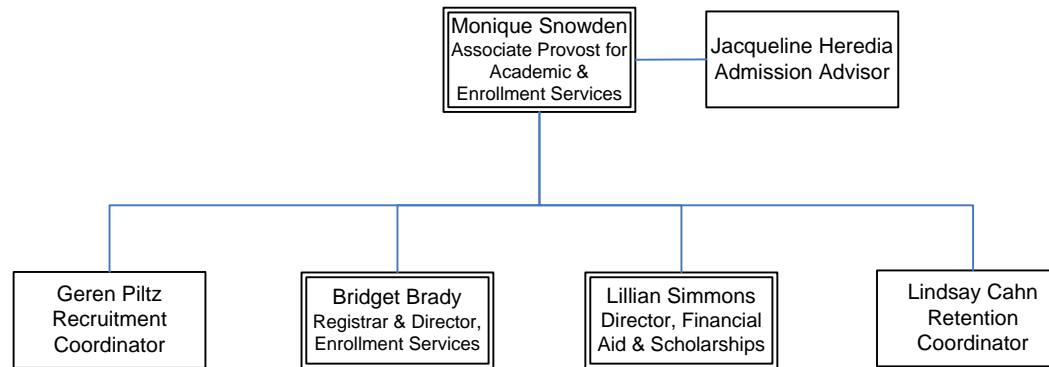
Academic Entrepreneurship



Key

Manager/Supervisor: =====
Consultant/Temp: - . - . - . -
Vacancy:

Academic and Enrollment Services Team



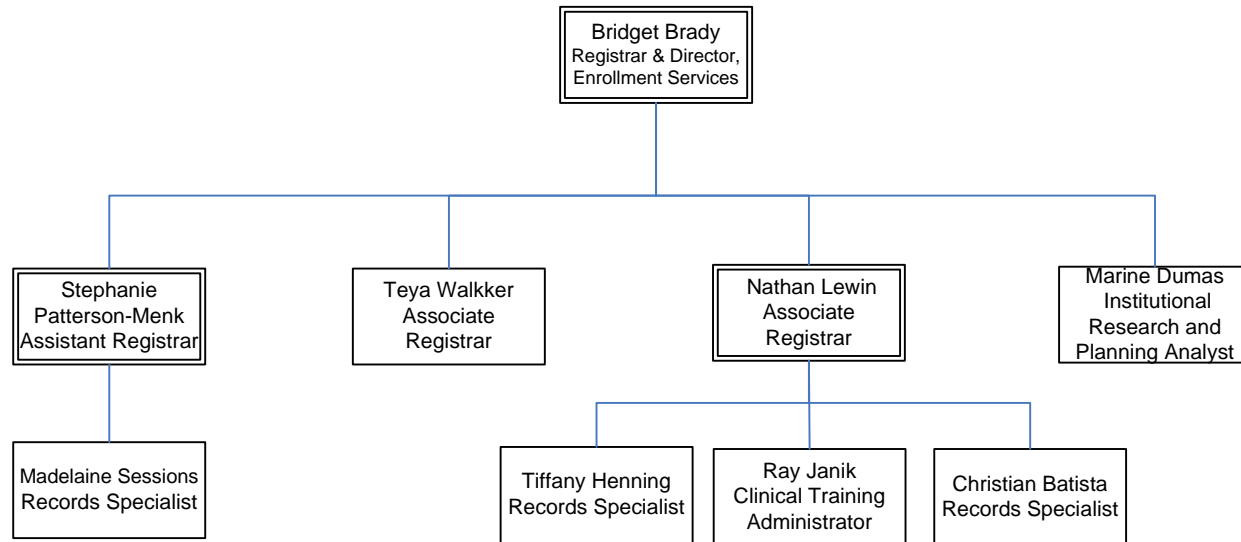
Key

Manager/Supervisor: =====

Consultant/Temp: - . - . - . -

Vacancy:

Registrar & Enrollment Services



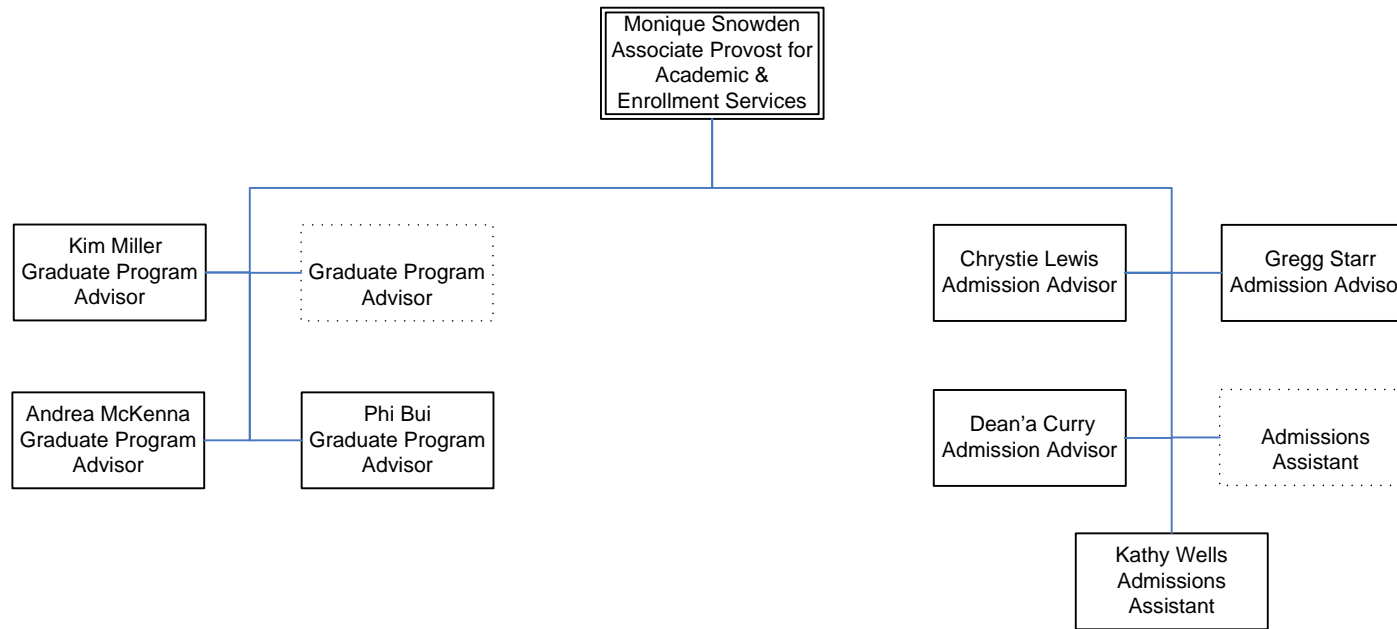
Key

Manager/Supervisor: =====

Consultant/Temp: - . - . - . -

Vacancy:

Admissions & Advising



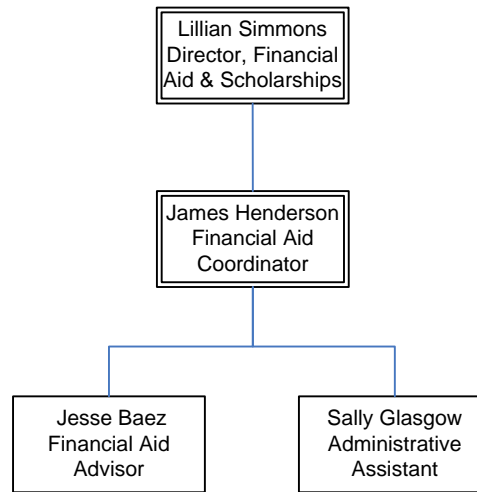
Key

Manager/Supervisor: =====

Consultant/Temp: - . - . - . -

Vacancy:

Financial Aid & Scholarships



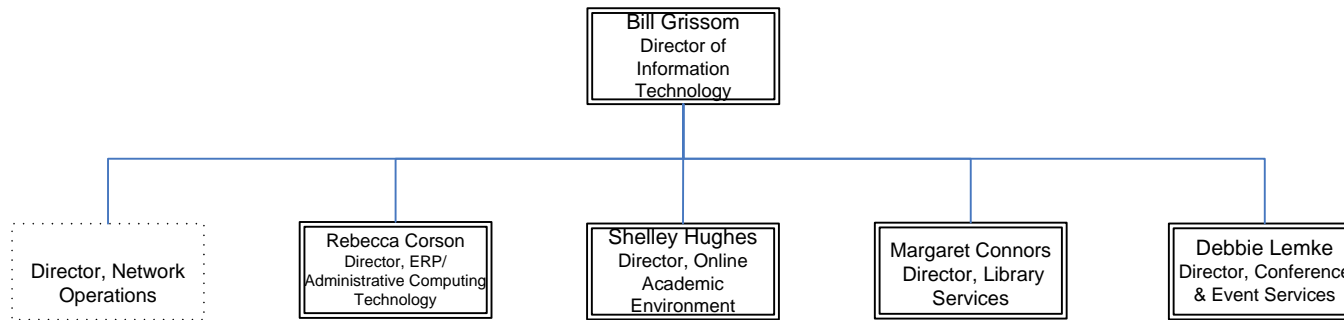
Key

Manager/Supervisor: =====

Consultant/Temp: - . - . - . -

Vacancy:

Research, Learning and Information Technology Team



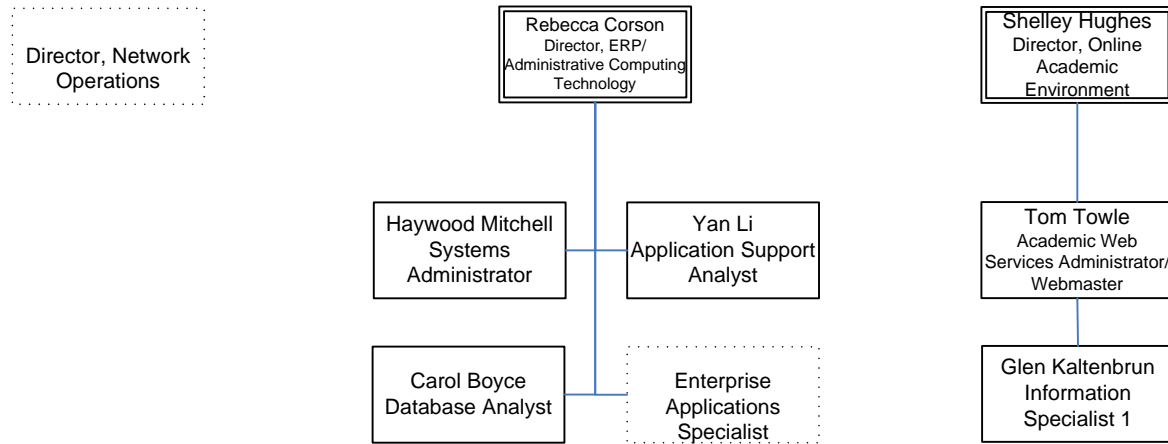
Key

Manager/Supervisor: =====

Consultant/Temp: -.-.-.-.-

Vacancy:

Information & Communication Technology



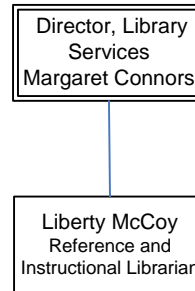
Key

Manager/Supervisor: =====

Consultant/Temp: - . - . - . -

Vacancy:

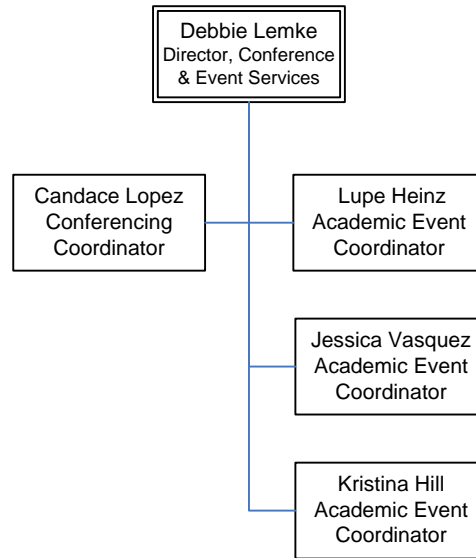
Library Services



Key

Manager/Supervisor: =====
Consultant/Temp: _ . _ . _ . _
Vacancy:

Academic Conferencing and Events



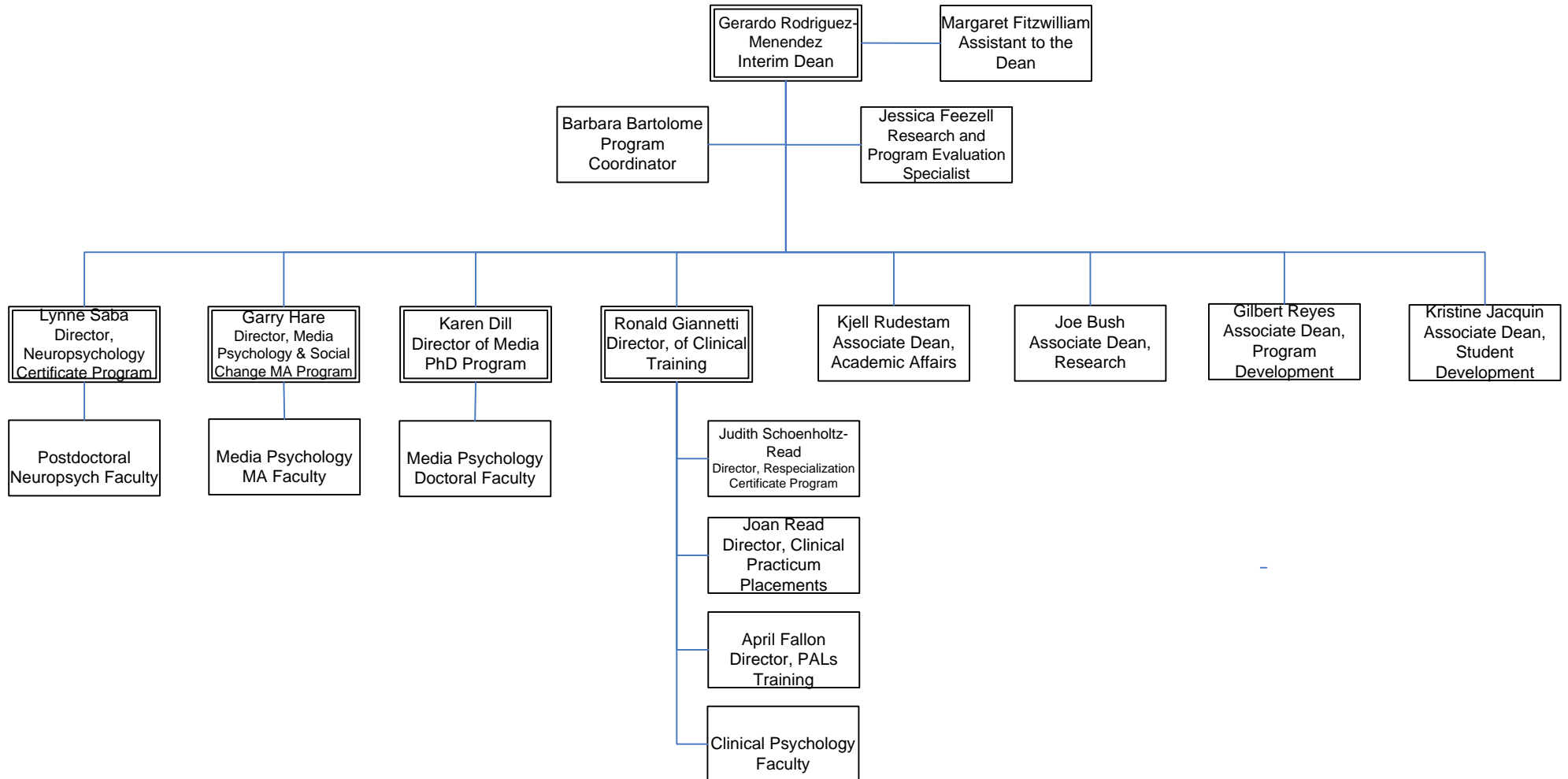
Key

Manager/Supervisor: =====

Consultant/Temp: - . - . - . -

Vacancy:

School of Psychology



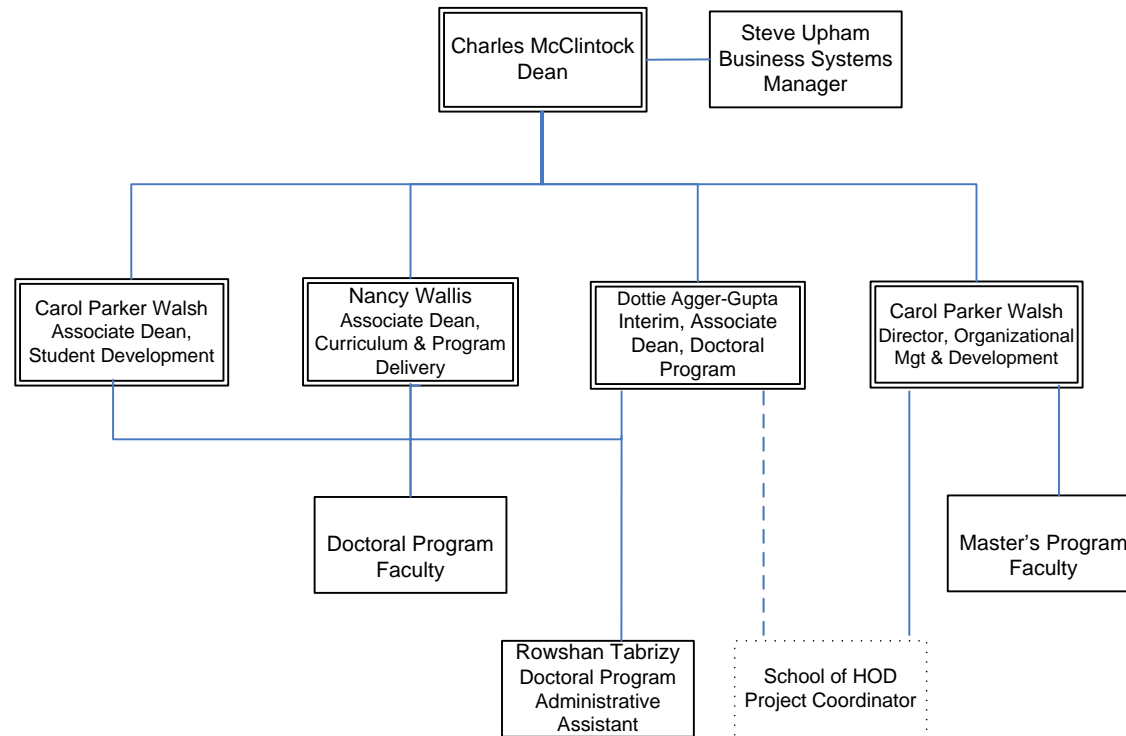
Key

Manager/Supervisor: =====

Consultant/Temp: - . - . - . -

Vacancy:

School of Human & Organizational Development



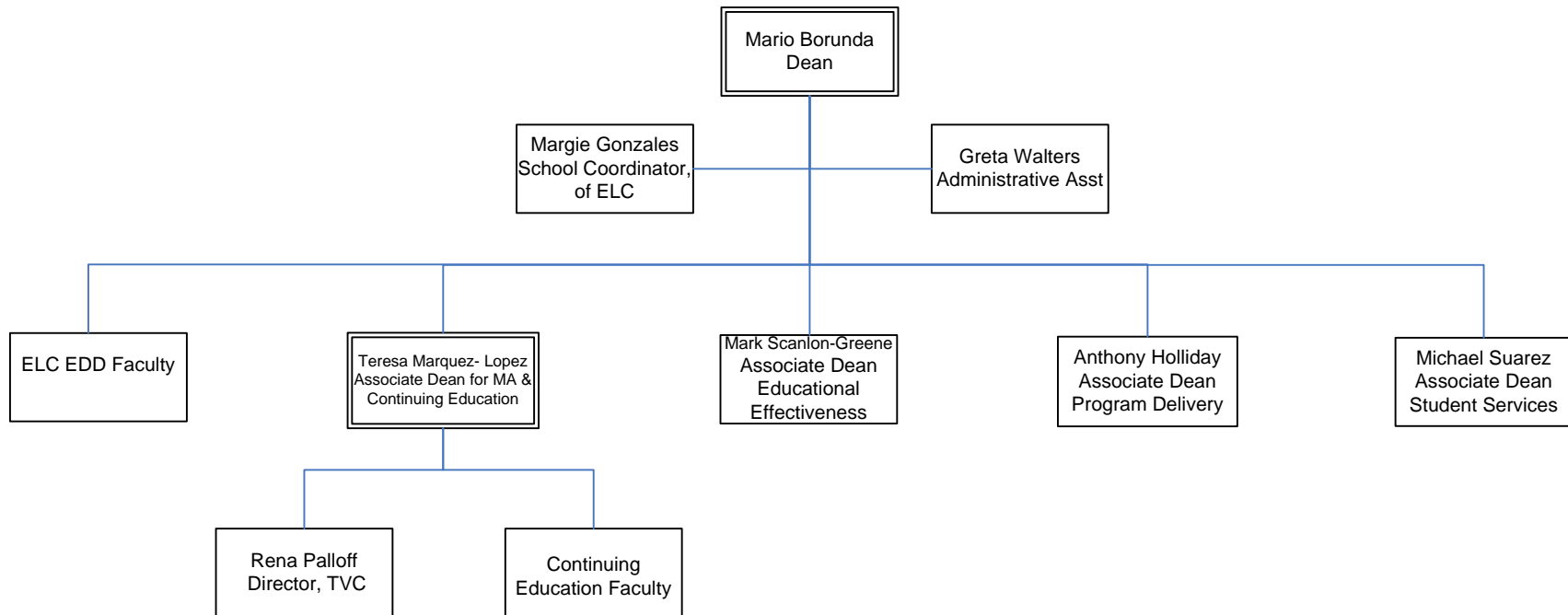
Key

Manager/Supervisor: =====

Consultant/Temp: - - - - -

Vacancy:

School of Educational & Leadership Change



Key

Manager/Supervisor: =====

Consultant/Temp: - . - . - . -

Vacancy: